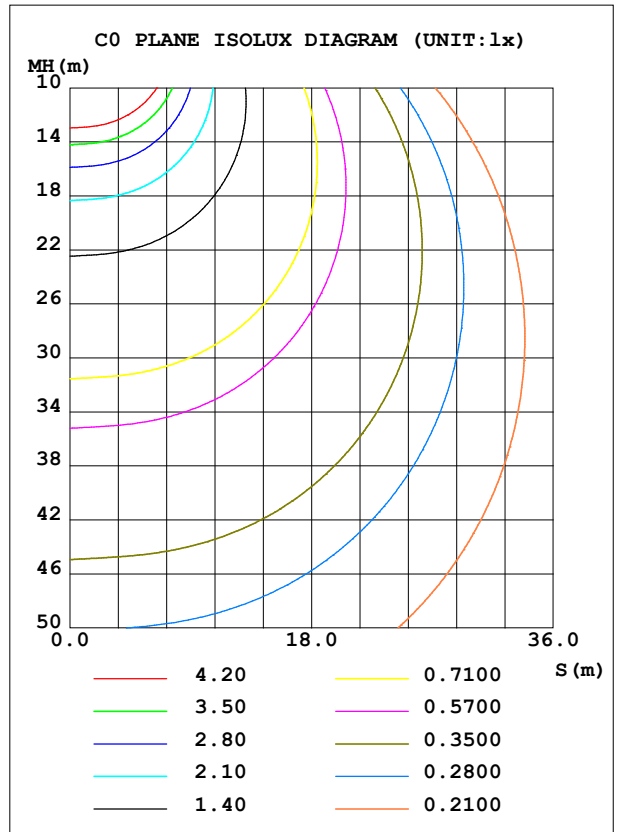
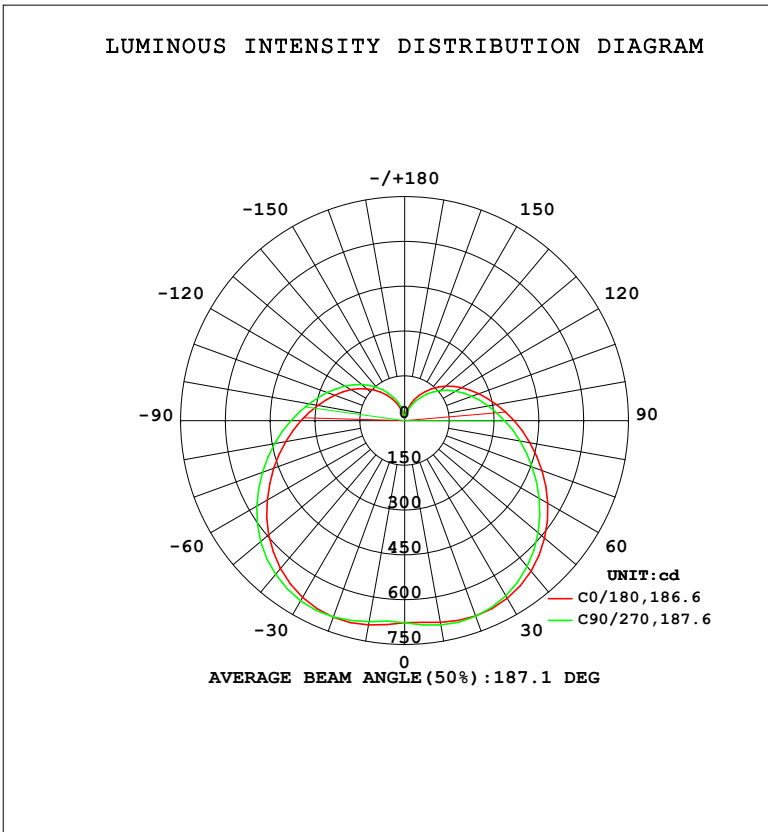


**LUMINAIRE PHOTOMETRIC TEST REPORT**

Test:U:220.29V I:0.3753A P:41.383W PF:0.5006 Freq:50.00Hz Lamp Flux:4716.23x1 lm		
NAME: 球泡	TYPE:	WEIGHT:
SPEC.:	DIM.:	SERIAL No.:
MFR.: EVERFINE	SUR.: 1	Shielding Angle:

DATA OF LAMP		PHOTOMETRIC DATA				Eff: 113.96 lm/W
MODEL	CF62	I <sub>max</sub> (cd)	701.4	S/MH (C0/180)	1.50	
NOMINAL POWER (W)	45	LOR (%)	100.0	S/MH (C90/270)	1.54	
RATED VOLTAGE (V)	220	TOTAL FLUX (lm)	4716.2	η UP, DN (C0-180)	13.2, 35.5	
NOMINAL FLUX (lm)	4716.23	CIE CLASS	SEMI-D.	η UP, DN (C180-360)	14.4, 36.9	
LAMPS INSIDE	1	η up (%)	27.6	CIBSE SHR NOM	1.75	
TEST VOLTAGE (V)	219.5	η down (%)	72.4	CIBSE SHR MAX	1.75	



C Range: 0 - 360DEG  
 C Interval: 22.5DEG  
 Test Speed: HIGH  
 Temperature: 25.3°C  
 Operators: DAMIN  
 Test Date: 2023-11-09

γ Range: 0 - 180DEG  
 γ Interval: 5.0DEG  
 Test System: EVERFINE GO-2000B\_V1 SYSTEM V2.00.473  
 Humidity: 65.0%  
 Test Distance: 9.401m [K=1.0000]  
 Remarks:

ZONAL FLUX DIAGRAM

ZONAL FLUX DIAGRAM:

γ	C0	C45	C90	C135	C180	C225	C270	C315	γ	Φ zone	Φ total	%lum,lamp
10	686.1	691.5	695.1	696.8	694.8	689.4	683.3	682.0	0- 10	65.29	65.29	1.38,1.38
20	696.5	696.5	697.0	698.8	700.5	700.4	699.7	698.8	10- 20	197.2	262.5	5.57,5.57
30	687.7	680.8	677.4	678.5	683.8	691.0	697.2	696.5	20- 30	321.1	583.7	12.4,12.4
40	658.7	645.8	638.3	638.6	647.3	660.1	672.7	673.3	30- 40	421.7	1005	21.3,21.3
50	612.4	594.9	583.6	582.9	594.6	612.3	629.7	630.9	40- 50	488.1	1493	31.7,31.7
60	553.8	533.5	520.0	518.8	531.6	551.9	572.3	574.3	50- 60	515.9	2009	42.6,42.6
70	489.4	468.8	454.6	453.5	466.6	487.2	507.2	509.9	60- 70	508.1	2517	53.4,53.4
80	426.2	406.3	392.3	391.4	404.4	424.1	442.5	444.9	70- 80	473.7	2991	63.4,63.4
90	366.7	348.6	335.3	334.3	347.3	364.9	381.4	383.6	80- 90	422.2	3413	72.4,72.4
100	312.9	296.7	284.9	283.8	295.9	312.0	325.9	327.9	90-100	361.3	3775	80,80
110	265.0	250.8	239.9	238.9	250.5	264.5	276.3	278.1	100-110	297.7	4072	86.3,86.3
120	221.9	208.3	197.9	197.1	208.1	221.4	231.5	233.1	110-120	234.8	4307	91.3,91.3
130	180.5	167.3	157.0	156.1	166.4	179.3	188.7	190.3	120-130	174.3	4481	95,95
140	138.9	126.3	116.3	115.2	125.1	137.5	146.6	148.0	130-140	118.4	4600	97.5,97.5
150	98.18	86.37	76.76	75.66	84.96	96.81	105.1	106.2	140-150	70.39	4670	99,99
160	59.57	49.08	40.42	39.28	47.45	58.06	65.27	66.19	150-160	33.74	4704	99.7,99.7
170	26.37	19.38	13.75	13.02	18.13	25.23	30.13	30.54	160-170	10.82	4715	100,100
180	8.704	8.752	8.979	9.113	8.814	8.830	9.052	9.211	170-180	1.499	4716	100,100
DEG	LUMINOUS INTENSITY:cd									UNIT:lm		

Conical surface Flux(90deg): 1243.5 lm

%lum = 26.4%

%lamp = 26.4%

Conical surface Flux(130deg): 2266.2 lm

%lum = 48.1%

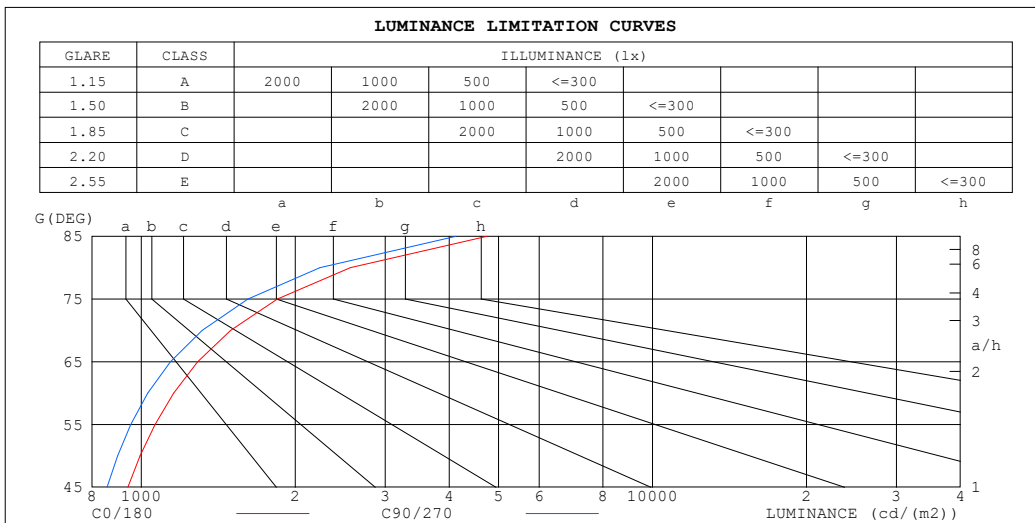
%lamp = 48.1%

C Range: 0 - 360DEG  
 C Interval: 22.5DEG  
 Test Speed: HIGH  
 Temperature:25.3°C  
 Operators:DAMIN  
 Test Date:2023-11-09

γ Range: 0 - 180DEG  
 γ Interval: 5.0DEG  
 Test System:EVERFINE GO-2000B\_V1 SYSTEM V2.00.473  
 Humidity:65.0%  
 Test Distance:9.401m [K=1.0000]  
 Remarks:

**LUMINANCE LIMITATION CURVES**

Test:U:220.29V I:0.3753A P:41.383W PF:0.5006 Freq:50.00Hz Lamp Flux:4716.23x1 lm		
NAME: 球泡	TYPE:	WEIGHT:
SPEC.:	DIM.:	SERIAL No.:
MFR.: EVERFINE	SUR.: 1	Shielding Angle:



LUMINANCE cd/(m2)		
G (DEG)	C0/180	C90/270
85	4742	4128
80	2562	2235
75	1845	1616
70	1494	1315
65	1289	1140
60	1156	1029
55	1064	953
50	995	898
45	941	857

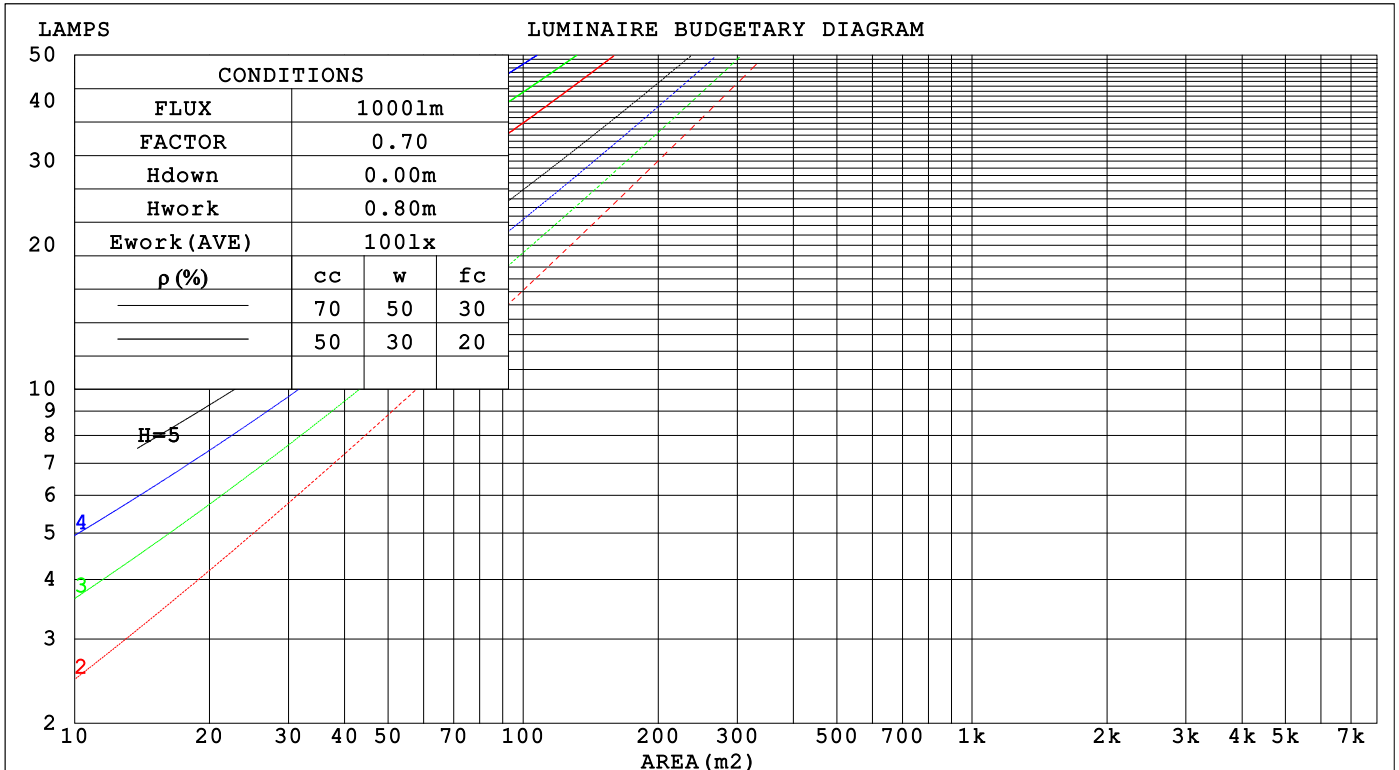
C Range: 0 - 360DEG  
 C Interval: 22.5DEG  
 Test Speed: HIGH  
 Temperature:25.3°C  
 Operators:DAMIN  
 Test Date:2023-11-09

γ Range: 0 - 180DEG  
 γ Interval: 5.0DEG  
 Test System:EVERFINE GO-2000B\_V1 SYSTEM V2.00.473  
 Humidity:65.0%  
 Test Distance:9.401m [K=1.0000]  
 Remarks:

CU AND LUMINAIRE BUDGETARY ESTIMATE DIAGRAM

Test:U:220.29V I:0.3753A P:41.383W PF:0.5006 Freq:50.00Hz Lamp Flux:4716.23x1 lm		
NAME: 球泡	TYPE:	WEIGHT:
SPEC.:	DIM.:	SERIAL No.:
MFR.: EVERFINE	SUR.: 1	Shielding Angle:

pcc	80%			70%			50%			30%			10%			0
pw	50%	30%	10%	50%	30%	10%	50%	30%	10%	50%	30%	10%	50%	30%	10%	0
pfc	20%			20%			20%			20%			20%			0
RCR	RCR:Room Cavity Ratio						Coefficients of Utilization(CU)									
0.0	1.12	1.12	1.12	1.07	1.07	1.07	.96	.96	.96	.86	.86	.86	.77	.77	.77	.72
1.0	.92	.87	.81	.87	.82	.78	.78	.74	.70	.69	.66	.63	.61	.59	.56	.52
2.0	.78	.70	.63	.74	.67	.60	.66	.60	.55	.58	.54	.49	.51	.48	.44	.40
3.0	.67	.58	.51	.64	.55	.49	.57	.50	.44	.50	.45	.40	.44	.40	.36	.32
4.0	.59	.49	.42	.56	.47	.40	.50	.42	.37	.44	.38	.33	.39	.34	.30	.27
5.0	.52	.42	.35	.49	.40	.34	.44	.37	.31	.39	.33	.28	.34	.29	.25	.22
6.0	.46	.37	.30	.44	.35	.29	.39	.32	.27	.35	.29	.24	.31	.26	.22	.19
7.0	.42	.33	.26	.40	.31	.25	.36	.28	.23	.32	.26	.21	.28	.23	.19	.17
8.0	.38	.29	.23	.36	.28	.22	.32	.25	.20	.29	.23	.19	.26	.21	.17	.15
9.0	.34	.26	.20	.33	.25	.20	.30	.23	.18	.27	.21	.17	.24	.19	.15	.13
10.0	.32	.24	.18	.30	.23	.18	.27	.21	.16	.25	.19	.15	.22	.17	.14	.12



C Range: 0 - 360DEG  
 C Interval: 22.5DEG  
 Test Speed: HIGH  
 Temperature:25.3°C  
 Operators:DAMIN  
 Test Date:2023-11-09

γ Range: 0 - 180DEG  
 γ Interval: 5.0DEG  
 Test System:EVERFINE GO-2000B\_V1 SYSTEM V2.00.473  
 Humidity:65.0%  
 Test Distance:9.401m [K=1.0000]  
 Remarks:

WEC AND CCEC

Test:U:220.29V I:0.3753A P:41.383W PF:0.5006 Freq:50.00Hz								
Lamp Flux:4716.23x1 lm								
NAME: 球泡			TYPE:			WEIGHT:		
SPEC.:			DIM.:			SERIAL No.:		
MFR.: EVERFINE			SUR.: 1			Shielding Angle:		

$\rho_{CC}$	80%			70%			50%			30%			10%			0
$\rho_w$	50%	30%	10%	50%	30%	10%	50%	30%	10%	50%	30%	10%	50%	30%	10%	0
$\rho_{fc}$	20%			20%			20%			20%			20%			0
RCR	RCR:Room Cavity Ratio						Wall Exitance Coefficients (WEC)									
0.0																
1.0	.406	.231	.073	.391	.223	.071	.361	.207	.066	.334	.193	.062	.309	.179	.058	
2.0	.345	.189	.058	.331	.182	.056	.304	.169	.052	.279	.157	.049	.256	.145	.046	
3.0	.303	.161	.048	.290	.155	.047	.266	.144	.044	.243	.133	.041	.223	.123	.038	
4.0	.271	.141	.041	.259	.136	.040	.237	.126	.038	.217	.116	.035	.198	.107	.033	
5.0	.245	.125	.036	.235	.120	.035	.214	.112	.033	.196	.103	.031	.178	.095	.029	
6.0	.224	.112	.032	.214	.108	.031	.196	.100	.029	.178	.093	.027	.162	.085	.025	
7.0	.206	.102	.029	.197	.098	.028	.180	.091	.026	.164	.084	.024	.149	.077	.023	
8.0	.191	.093	.026	.182	.090	.025	.167	.083	.024	.152	.077	.022	.138	.071	.021	
9.0	.177	.086	.024	.170	.083	.023	.155	.077	.022	.141	.071	.020	.129	.065	.019	
10.0	.166	.079	.022	.159	.077	.021	.145	.071	.020	.132	.066	.019	.120	.061	.017	

$\rho_{CC}$	80%			70%			50%			30%			10%			0
$\rho_w$	50%	30%	10%	50%	30%	10%	50%	30%	10%	50%	30%	10%	50%	30%	10%	0
$\rho_{fc}$	20%			20%			20%			20%			20%			0
RCR	RCR:Room Cavity Ratio						Ceiling Cavity Exitance Coefficients (CCEC)									
0.0	.401	.401	.401	.343	.343	.343	.234	.234	.234	.134	.134	.134	.043	.043	.043	
1.0	.399	.368	.339	.342	.315	.292	.234	.217	.202	.134	.126	.117	.043	.040	.038	
2.0	.393	.345	.305	.337	.297	.264	.231	.206	.184	.133	.120	.108	.043	.039	.035	
3.0	.386	.329	.284	.331	.284	.247	.227	.197	.173	.131	.115	.102	.042	.037	.033	
4.0	.378	.317	.271	.324	.274	.235	.223	.191	.166	.129	.112	.098	.042	.036	.032	
5.0	.370	.308	.261	.318	.266	.227	.219	.186	.161	.127	.109	.095	.041	.036	.031	
6.0	.363	.300	.255	.312	.260	.222	.215	.182	.157	.125	.107	.093	.040	.035	.031	
7.0	.356	.294	.250	.306	.254	.218	.211	.178	.154	.123	.105	.092	.040	.034	.030	
8.0	.349	.288	.246	.301	.250	.215	.208	.175	.152	.121	.104	.091	.039	.034	.030	
9.0	.343	.283	.243	.295	.246	.212	.205	.173	.151	.119	.102	.090	.039	.034	.030	
10.0	.337	.279	.241	.290	.243	.210	.202	.171	.149	.118	.101	.089	.038	.033	.030	

C Range: 0 - 360DEG  
 C Interval: 22.5DEG  
 Test Speed: HIGH  
 Temperature:25.3°C  
 Operators:DAMIN  
 Test Date:2023-11-09

$\gamma$  Range: 0 - 180DEG  
 $\gamma$  Interval: 5.0DEG  
 Test System:EVERFINE GO-2000B\_V1 SYSTEM V2.00.473  
 Humidity:65.0%  
 Test Distance:9.401m [K=1.0000]  
 Remarks:

**UGR(Unified Glare Rating) Table**

Test:U:220.29V I:0.3753A P:41.383W PF:0.5006 Freq:50.00Hz Lamp Flux:4716.23x1 lm		
NAME: 球泡	TYPE:	WEIGHT:
SPEC.:	DIM.:	SERIAL No.:
MFR.: EVERFINE	SUR.: 1	Shielding Angle:

ceiling/cavity	0.7	0.7	0.5	0.5	0.3	0.7	0.7	0.5	0.5	0.3
walls	0.5	0.3	0.5	0.3	0.3	0.5	0.3	0.5	0.3	0.3
working plane	0.2	0.2	0.2	0.2	0.2	0.2	0.2	0.2	0.2	0.2

Room dimensions	Viewed crosswise					Viewed endwise				
x = 2H y = 2H	6.1	7.4	6.7	8.0	8.8	5.6	6.9	6.2	7.5	8.3
3H	8.8	9.9	9.4	10.6	11.4	8.2	9.4	8.8	10.0	10.8
4H	10.2	11.4	10.9	12.1	12.9	9.6	10.7	10.3	11.4	12.2
6H	11.9	13.0	12.6	13.7	14.5	11.2	12.2	11.9	12.9	13.8
8H	12.8	13.8	13.5	14.5	15.4	12.0	13.1	12.7	13.8	14.6
12H	13.9	14.9	14.6	15.6	16.4	13.1	14.1	13.8	14.8	15.6
4H 2H	6.8	8.0	7.5	8.6	9.5	6.5	7.6	7.2	8.3	9.1
3H	9.7	10.7	10.4	11.4	12.3	9.2	10.2	9.9	11.0	11.8
4H	11.3	12.3	12.1	13.0	13.9	10.8	11.7	11.5	12.5	13.4
6H	13.2	14.0	13.9	14.8	15.7	12.6	13.4	13.3	14.1	15.1
8H	14.2	15.0	15.0	15.7	16.7	13.5	14.3	14.3	15.1	16.0
12H	15.4	16.1	16.2	16.9	17.8	14.7	15.4	15.5	16.2	17.1
8H 4H	11.9	12.7	12.7	13.4	14.4	11.5	12.2	12.2	13.0	13.9
6H	14.0	14.6	14.8	15.5	16.4	13.5	14.1	14.3	14.9	15.9
8H	15.2	15.8	16.0	16.6	17.6	14.7	15.2	15.5	16.1	17.1
12H	16.6	17.2	17.5	18.0	19.0	16.0	16.5	16.8	17.4	18.4
12H 4H	12.0	12.7	12.8	13.5	14.5	11.6	12.3	12.4	13.1	14.1
6H	14.2	14.8	15.1	15.6	16.6	13.8	14.4	14.6	15.2	16.2
8H	15.6	16.1	16.4	16.9	17.9	15.1	15.6	15.9	16.4	17.4

Variations with the observer position at spacings(CIE Pub.117):		
S = 1.0H	+ 0.1 / - 0.1	+ 0.1 / - 0.1
1.5H	+ 0.2 / - 0.3	+ 0.2 / - 0.3
2.0H	+ 0.3 / - 0.4	+ 0.3 / - 0.4

CIE Pub.117, 4716 lm Total Lamp Luminous Flux Correct (8log(F/F0) = 5.4)  
Area: 1 m2

C Range: 0 - 360DEG  
C Interval: 22.5DEG  
Test Speed: HIGH  
Temperature:25.3°C  
Operators:DAMIN  
Test Date:2023-11-09

γ Range: 0 - 180DEG  
γ Interval: 5.0DEG  
Test System:EVERFINE GO-2000B\_V1 SYSTEM V2.00.473  
Humidity:65.0%  
Test Distance:9.401m [K=1.0000]  
Remarks:

**UTILIZATION FACTORS TABLE**

Test:U:220.29V I:0.3753A P:41.383W PF:0.5006 Freq:50.00Hz Lamp Flux:4716.23x1 lm		
NAME: 球泡	TYPE:	WEIGHT:
SPEC.:	DIM.:	SERIAL No.:
MFR.: EVERFINE	SUR.: 1	Shielding Angle:

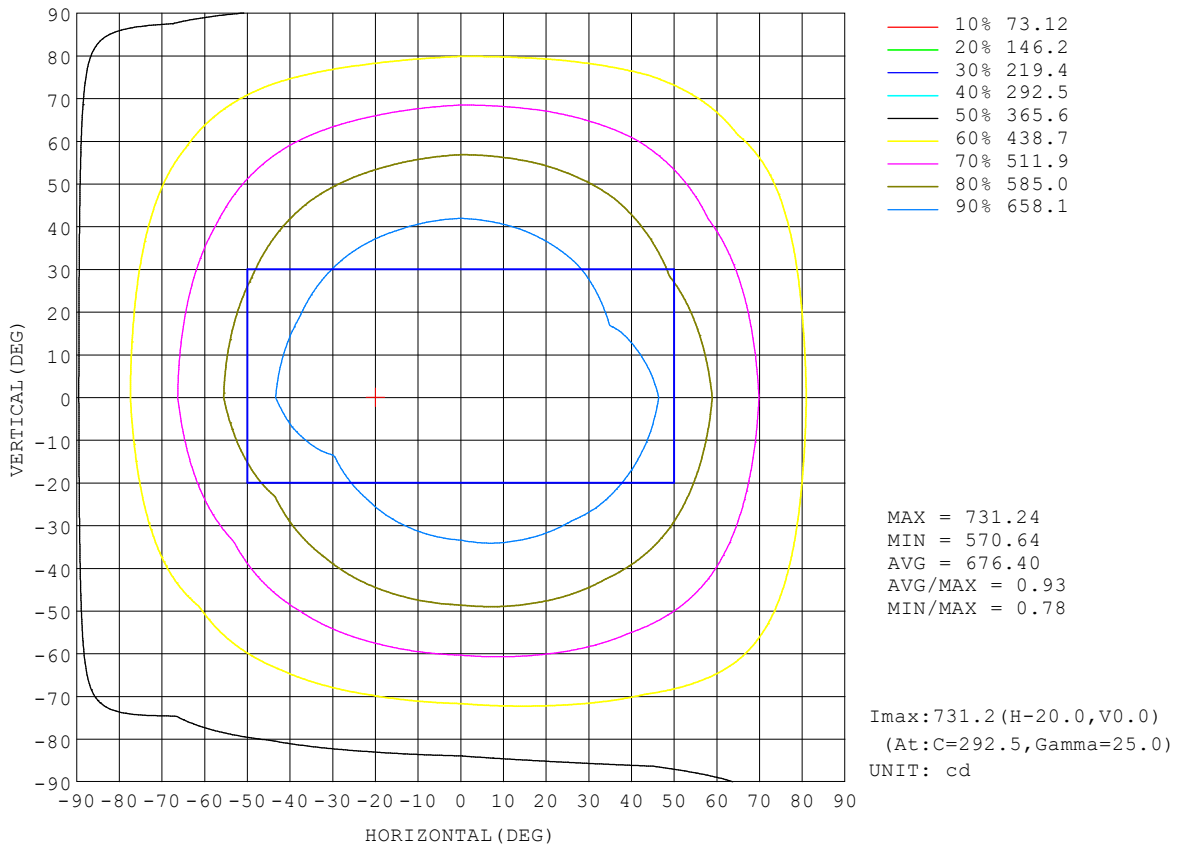
REFLECTANCE										
Ceiling	0.8	0.8	0.8	0.7	0.7	0.7	0.5	0.5	0.5	0
Walls	0.7	0.5	0.3	0.7	0.5	0.3	0.7	0.5	0.3	0
Working plane	0.2	0.2	0.2	0.2	0.2	0.2	0.2	0.2	0.2	0
ROOM INDEX	UTILIZATION FACTORS (PERCENT) $k(RI) \times RCR = 5$									
k = 0.60	43	30	23	42	30	23	39	29	22	15
0.80	52	39	30	50	38	30	47	36	29	20
1.00	60	46	37	57	45	36	53	44	35	25
1.25	66	53	44	64	51	43	58	48	41	30
1.50	72	59	49	68	57	48	63	53	45	33
2.00	79	67	58	75	65	56	69	60	53	39
2.50	84	73	64	80	70	62	72	64	58	43
3.00	88	78	70	83	74	67	75	68	62	46
4.00	93	84	77	88	80	74	79	73	68	50
5.00	96	88	82	91	84	78	82	77	72	54
ROOM INDEX	UF(total)									Direct
According to DIN EN 13032-2 2004			Suspended				SHRNOM = 1.25			

C Range: 0 - 360DEG  
 C Interval: 22.5DEG  
 Test Speed: HIGH  
 Temperature:25.3°C  
 Operators:DAMIN  
 Test Date:2023-11-09

$\gamma$  Range: 0 - 180DEG  
 $\gamma$  Interval: 5.0DEG  
 Test System:EVERFINE GO-2000B\_V1 SYSTEM V2.00.473  
 Humidity:65.0%  
 Test Distance:9.401m [K=1.0000]  
 Remarks:

**ISOCANDELA DIAGRAM**

Test:U:220.29V I:0.3753A P:41.383W PF:0.5006 Freq:50.00Hz Lamp Flux:4716.23x1 lm		
NAME: 球泡	TYPE:	WEIGHT:
SPEC.:	DIM.:	SERIAL No.:
MFR.: EVERFINE	SUR.: 1	Shielding Angle:



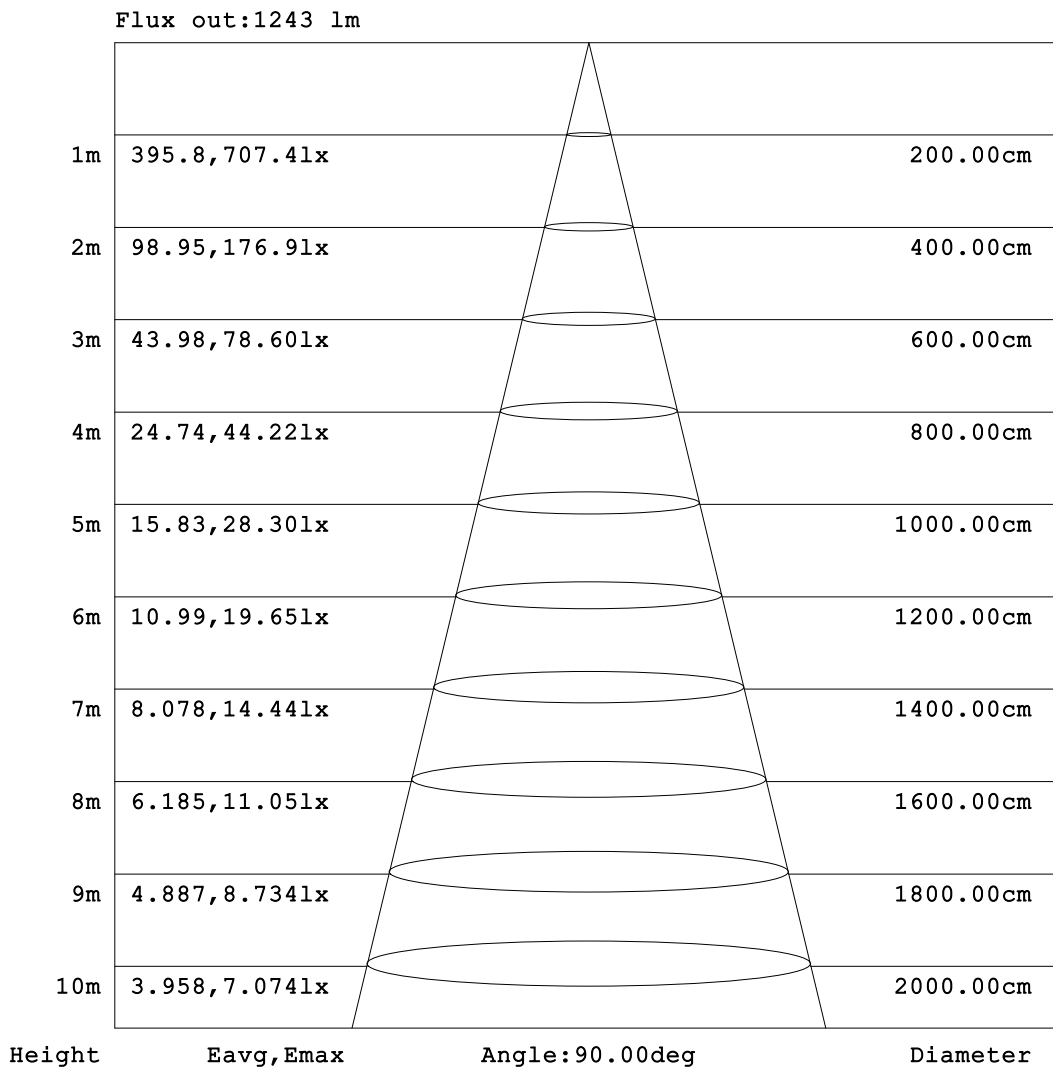
C Range: 0 - 360DEG  
 C Interval: 22.5DEG  
 Test Speed: HIGH  
 Temperature: 25.3°C  
 Operators: DAMIN  
 Test Date: 2023-11-09

γ Range: 0 - 180DEG  
 γ Interval: 5.0DEG  
 Test System: EVERFINE GO-2000B\_V1 SYSTEM V2.00.473  
 Humidity: 65.0%  
 Test Distance: 9.401m [K=1.0000]  
 Remarks:



**AAI Figure**

Test:U:220.29V I:0.3753A P:41.383W PF:0.5006 Freq:50.00Hz Lamp Flux:4716.23x1 lm		
NAME: 球泡	TYPE:	WEIGHT:
SPEC.:	DIM.:	SERIAL No.:
MFR.: EVERFINE	SUR.: 1	Shielding Angle:



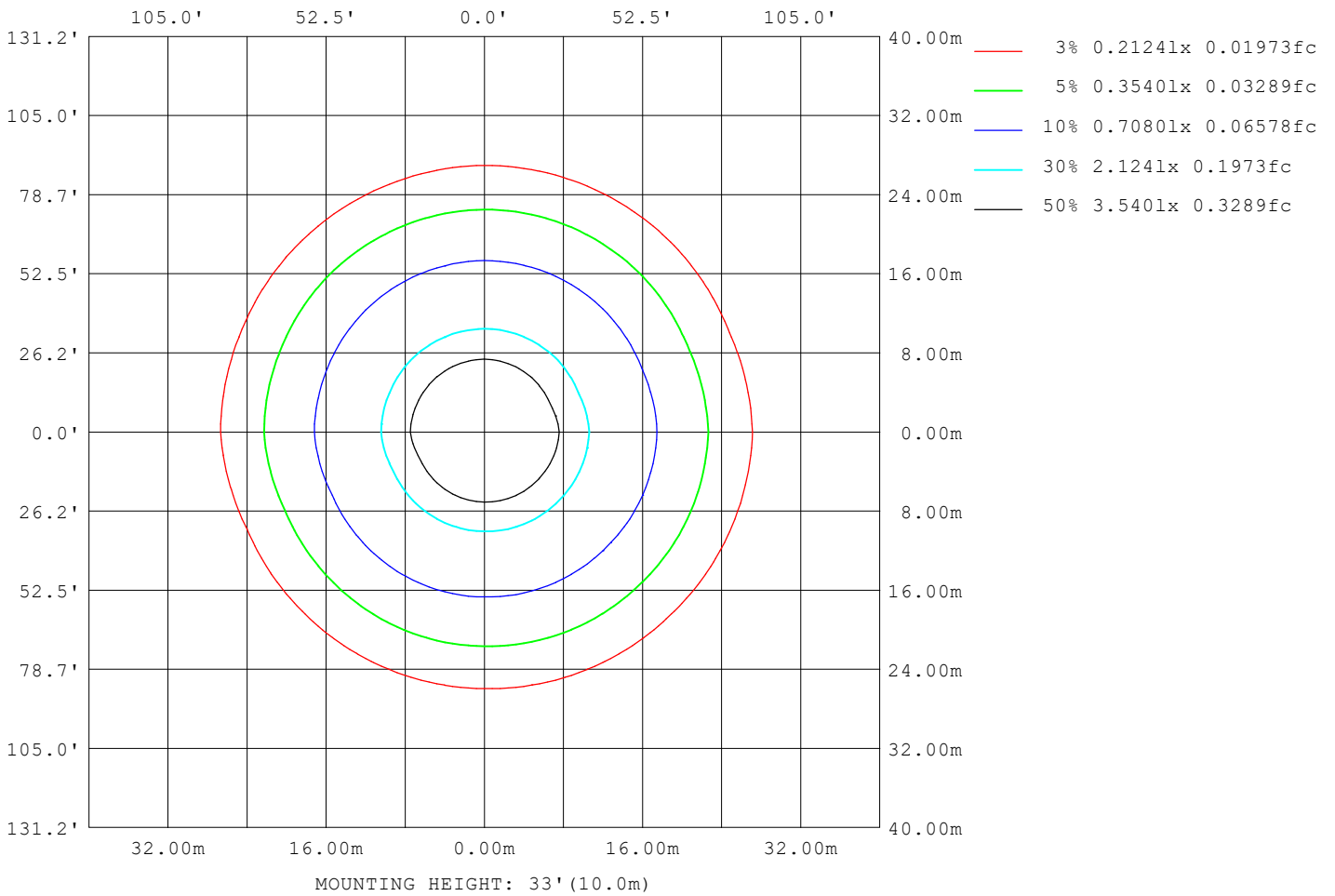
Note: The Curves indicate the illuminated area and the average illumination when the luminaire is at different distance.

C Range: 0 - 360DEG  
C Interval: 22.5DEG  
Test Speed: HIGH  
Temperature: 25.3°C  
Operators: DAMIN  
Test Date: 2023-11-09

γ Range: 0 - 180DEG  
γ Interval: 5.0DEG  
Test System: EVERFINE GO-2000B\_V1 SYSTEM V2.00.473  
Humidity: 65.0%  
Test Distance: 9.401m [K=1.0000]  
Remarks:

**ISOLUX DIAGRAM**

Test:U:220.29V I:0.3753A P:41.383W PF:0.5006 Freq:50.00Hz Lamp Flux:4716.23x1 lm		
NAME: 球泡	TYPE:	WEIGHT:
SPEC.:	DIM.:	SERIAL No.:
MFR.: EVERFINE	SUR.: 1	Shielding Angle:



C Range: 0 - 360DEG  
 C Interval: 22.5DEG  
 Test Speed: HIGH  
 Temperature:25.3°C  
 Operators:DAMIN  
 Test Date:2023-11-09

γ Range: 0 - 180DEG  
 γ Interval: 5.0DEG  
 Test System:EVERFINE GO-2000B\_V1 SYSTEM V2.00.473  
 Humidity:65.0%  
 Test Distance:9.401m [K=1.0000]  
 Remarks:

**LED Avg.L Report**

Test:U:220.29V I:0.3753A P:41.383W PF:0.5006 Freq:50.00Hz Lamp Flux:4716.23x1 lm		
NAME: 球泡	TYPE:	WEIGHT:
SPEC.:	DIM.:	SERIAL No.:
MFR.: EVERFINE	SUR.: 1	Shielding Angle:

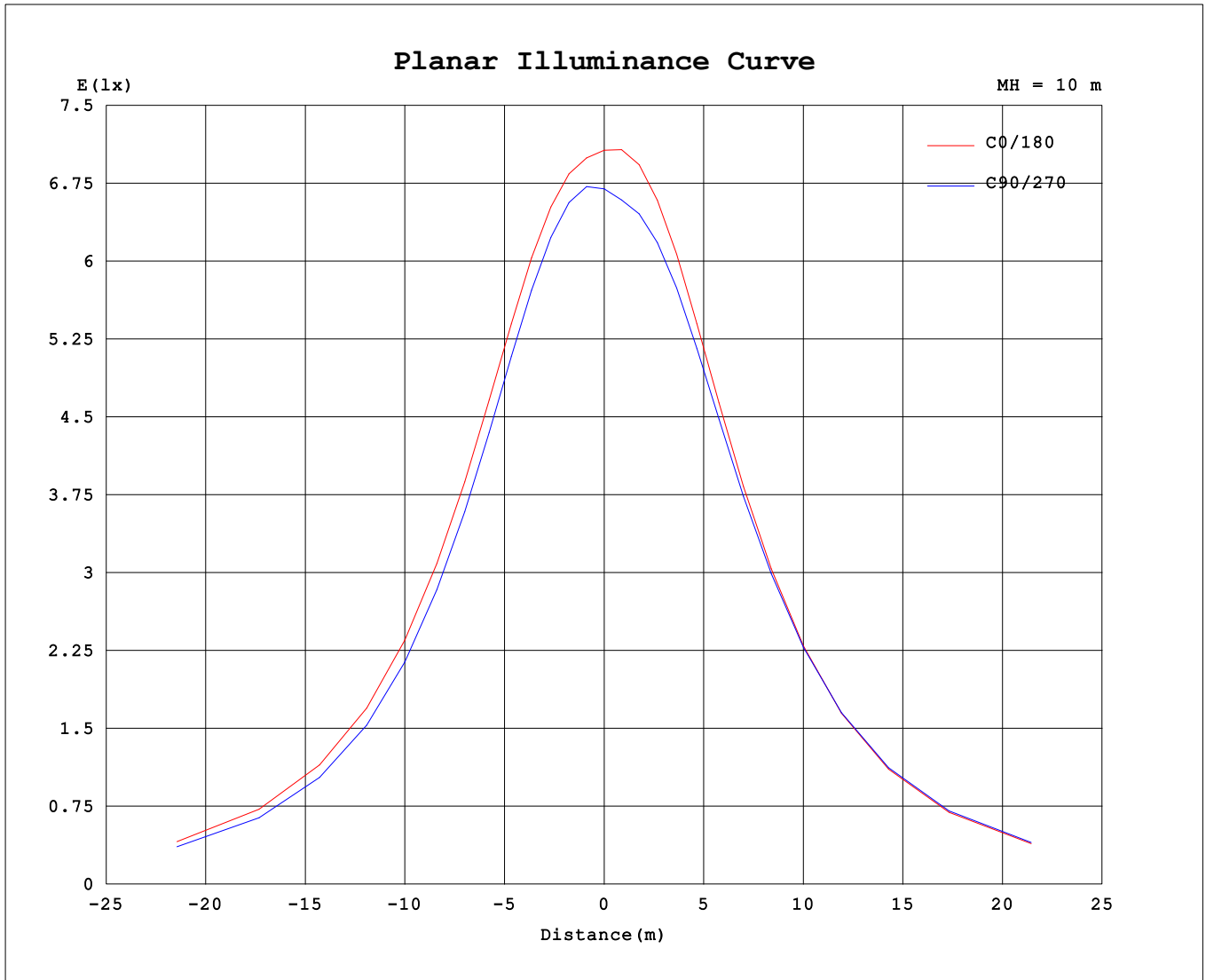
AvgL	cd/m2
L_0~180 (65) av	1207
L_0~180 (75) av	1724
L_0~180 (85) av	4422
L_90~270 (65) av	1215
L_90~270 (75) av	1733
L_90~270 (85) av	4448
L_45 (65) av	1212
L_45 (75) av	1730
L_45 (85) av	4437

Standard: GB/T 29293-2012

C Range: 0 - 360DEG  
 C Interval: 22.5DEG  
 Test Speed: HIGH  
 Temperature:25.3°C  
 Operators:DAMIN  
 Test Date:2023-11-09

γ Range: 0 - 180DEG  
 γ Interval: 5.0DEG  
 Test System:EVERFINE GO-2000B\_V1 SYSTEM V2.00.473  
 Humidity:65.0%  
 Test Distance:9.401m [K=1.0000]  
 Remarks:

**Planar Illuminance Curve**



C Range: 0 - 360DEG  
 C Interval: 22.5DEG  
 Test Speed: HIGH  
 Temperature: 25.3°C  
 Operators: DAMIN  
 Test Date: 2023-11-09

γ Range: 0 - 180DEG  
 γ Interval: 5.0DEG  
 Test System: EVERFINE GO-2000B\_V1 SYSTEM V2.00.473  
 Humidity: 65.0%  
 Test Distance: 9.401m [K=1.0000]  
 Remarks:

LUMINOUS DISTRIBUTION INTENSITY DATA

Test:U:220.29V I:0.3753A P:41.383W PF:0.5006 Freq:50.00Hz Lamp Flux:4716.23x1 lm		
NAME: 球泡	TYPE:	WEIGHT:
SPEC.:	DIM.:	SERIAL No.:
MFR.: EVERFINE	SUR.: 1	Shielding Angle:

Table--1

UNIT: cd

C (DEG) \ γ (DEG)	0	22.5	45	67.5	90	112.5	135	157.5	180	202.5	225	247.5	270	292.5	315	337.5			
0	677	677	677	677	677	677	677	677	677	677	677	677	677	677	677	677			
5	678	681	684	686	687	688	688	687	685	683	681	677	674	672	672	675			
10	686	689	692	694	695	697	697	696	695	692	689	686	683	682	682	684			
15	693	695	697	699	699	700	701	701	700	698	697	695	693	692	692	694			
20	696	697	697	698	697	699	699	700	700	699	700	700	700	700	699	699			
25	695	694	691	692	690	691	691	694	695	695	698	700	701	701	700	699			
30	688	685	681	681	677	678	679	681	684	685	691	694	697	698	697	694			
35	676	672	666	664	660	661	661	664	668	670	678	683	687	689	687	683			
40	659	654	646	643	638	638	639	643	647	651	660	667	673	674	673	668			
45	637	631	622	618	612	612	612	617	622	627	638	646	653	655	654	648			
50	612	605	595	590	584	584	583	588	595	600	612	621	630	632	631	624			
55	584	577	565	560	553	552	552	557	564	569	583	593	602	605	604	597			
60	554	546	533	528	520	519	519	525	532	538	552	562	572	575	574	567			
65	522	514	501	495	487	486	486	492	499	505	520	530	540	543	542	535			
70	489	481	469	463	455	453	454	459	467	473	487	497	507	510	510	502			
75	457	450	437	431	423	422	422	428	435	441	455	465	475	477	477	470			
80	426	419	406	400	392	391	391	397	404	410	424	433	443	445	445	438			
85	396	389	377	371	364	363	362	368	375	380	394	402	412	414	414	407			
90	367	360	349	344	335	335	334	341	347	352	365	373	381	384	384	377			
95	339	334	322	317	309	309	308	314	321	325	338	344	353	355	355	349			
100	313	308	297	292	285	284	284	290	296	300	312	318	326	327	328	322			
105	288	284	273	269	262	261	261	266	273	276	288	293	300	301	302	297			
110	265	261	251	247	240	240	239	244	251	254	265	270	276	277	278	273			
115	243	239	229	225	219	218	218	223	229	233	243	247	253	254	255	250			
120	222	218	208	204	198	197	197	202	208	212	221	226	232	232	233	229			
125	201	197	188	183	178	176	177	181	187	191	200	204	210	211	212	207			
130	180	176	167	163	157	156	156	160	166	171	179	184	189	190	190	187			
135	160	155	147	142	137	135	136	140	146	150	158	163	168	169	169	166			
140	139	134	126	122	116	115	115	119	125	130	138	142	147	148	148	144			
145	118	114	106	102	96.3	94.9	95.2	99.3	105	109	117	121	126	127	127	124			
150	98.2	93.8	86.4	81.8	76.8	75.3	75.7	79.6	85.0	89.6	96.8	101	105	106	106	103			
155	78.5	74.2	67.3	62.7	58.0	56.6	56.8	60.6	65.6	70.3	77.0	80.9	84.9	85.9	85.9	82.9			
160	59.6	55.4	49.1	44.7	40.4	39.0	39.3	42.7	47.5	52.0	58.1	61.8	65.3	66.3	66.2	63.4			
165	41.9	38.1	32.7	28.8	25.0	23.8	24.0	26.9	31.1	35.2	40.4	43.8	46.8	47.6	47.5	45.0			
170	26.4	23.4	19.4	16.3	13.7	12.8	13.0	15.0	18.1	21.3	25.2	27.7	30.1	30.6	30.5	28.5			
175	14.4	12.9	10.8	9.75	9.35	9.40	9.34	9.44	10.5	11.9	13.9	15.3	16.6	16.8	16.7	15.5			
180	8.70	8.85	8.75	8.89	8.98	9.15	9.11	9.14	8.81	8.73	8.83	8.90	9.05	9.20	9.21	9.15			

C Range: 0 - 360DEG  
 C Interval: 22.5DEG  
 Test Speed: HIGH  
 Temperature:25.3℃  
 Operators:DAMIN  
 Test Date:2023-11-09

γ Range: 0 - 180DEG  
 γ Interval: 5.0DEG  
 Test System:EVERFINE GO-2000B\_V1 SYSTEM V2.00.473  
 Humidity:65.0%  
 Test Distance:9.401m [K=1.0000]  
 Remarks: