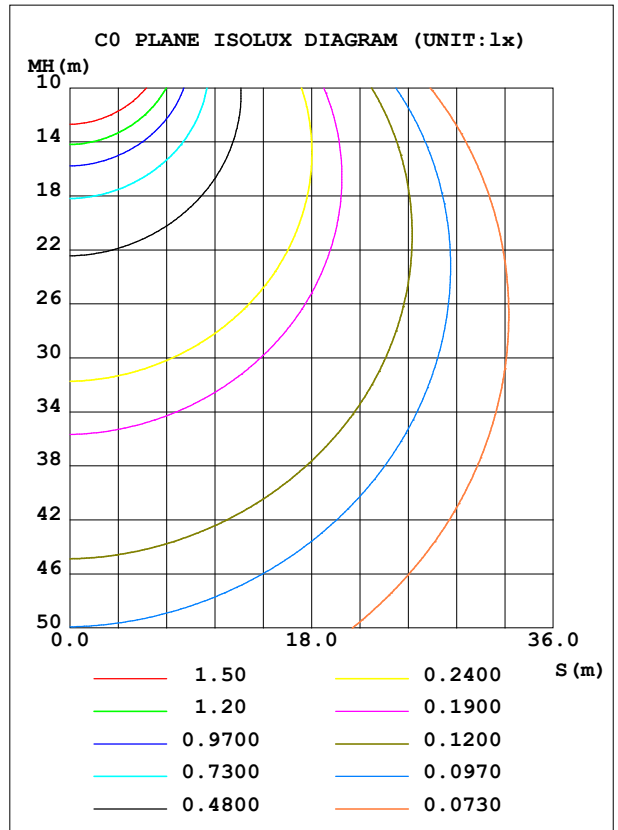
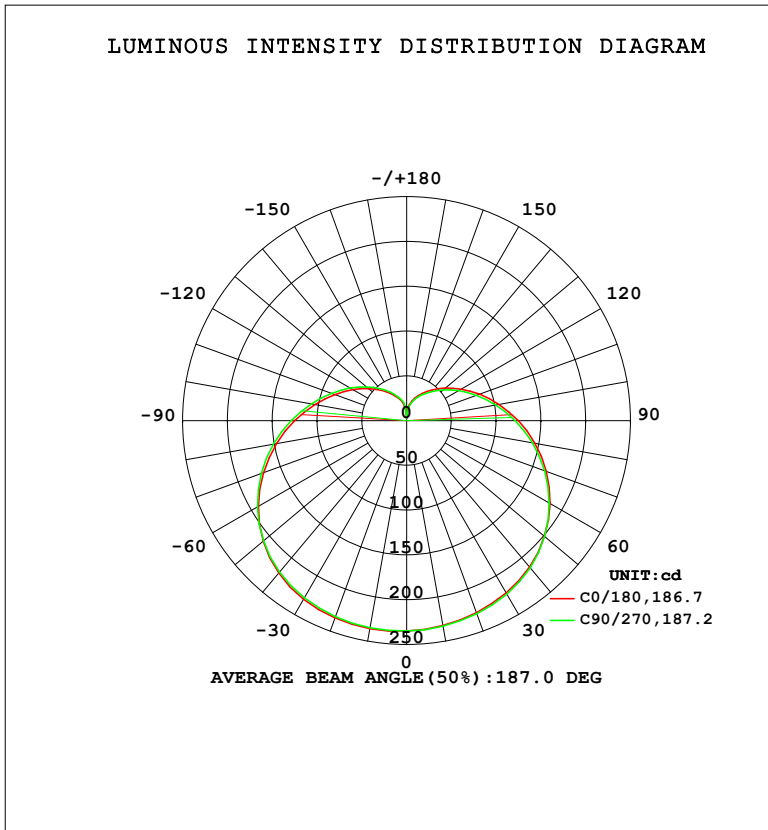


LUMINAIRE PHOTOMETRIC TEST REPORT

Test:U:220.33V I:0.1204A P:13.515W PF:0.5096 Freq:50.00Hz Lamp Flux:1611.39x1 lm		
NAME: 球泡	TYPE:	WEIGHT:
SPEC.:	DIM.:	SERIAL No.:
MFR.: EVERFINE	SUR.: 1	Shielding Angle:

DATA OF LAMP		PHOTOMETRIC DATA				Eff: 119.23 lm/W
MODEL	A80	I _{max} (cd)	235.8	S/MH (C0/180)	1.48	
NOMINAL POWER (W)	15	LOR (%)	100.0	S/MH (C90/270)	1.47	
RATED VOLTAGE (V)	220	TOTAL FLUX (lm)	1611.4	η UP, DN (C0-180)	13.5, 35.6	
NOMINAL FLUX (lm)	1611.39	CIE CLASS	SEMI-D.	η UP, DN (C180-360)	14.2, 36.7	
LAMPS INSIDE	1	η up (%)	27.7	CIBSE SHR NOM	1.50	
TEST VOLTAGE (V)	219.5	η down (%)	72.3	CIBSE SHR MAX	1.55	



C Range: 0 - 360DEG
 C Interval: 22.5DEG
 Test Speed: HIGH
 Temperature: 25.3°C
 Operators: DAMIN
 Test Date: 2023-11-09

γ Range: 0 - 180DEG
 γ Interval: 5.0DEG
 Test System: EVERFINE GO-2000B_V1 SYSTEM V2.00.473
 Humidity: 65.0%
 Test Distance: 9.401m [K=1.0000]
 Remarks:

ZONAL FLUX DIAGRAM

ZONAL FLUX DIAGRAM:

γ	C0	C45	C90	C135	C180	C225	C270	C315	γ	Φ zone	Φ total	%lum, lamp
10	232.3	232.0	233.1	234.5	235.8	235.7	234.8	233.7	0- 10	22.38	22.38	1.39,1.39
20	228.1	227.4	229.4	232.2	234.4	234.3	232.9	230.5	10- 20	65.92	88.30	5.48,5.48
30	222.1	221.2	223.7	227.2	230.3	230.3	228.6	225.7	20- 30	105.8	194.1	12,12
40	213.4	211.8	214.5	218.7	222.2	222.6	221.0	217.8	30- 40	139.5	333.6	20.7,20.7
50	200.9	198.8	201.0	205.2	209.0	209.8	208.7	205.8	40- 50	163.8	497.4	30.9,30.9
60	184.8	182.2	183.7	187.3	191.3	192.8	192.4	189.8	50- 60	176.3	673.7	41.8,41.8
70	165.9	163.1	163.9	166.5	170.2	172.4	172.6	170.6	60- 70	176.8	850.5	52.8,52.8
80	145.4	142.6	142.5	144.0	147.6	150.1	151.0	149.6	70- 80	166.5	1017	63.1,63.1
90	124.7	122.1	121.3	122.0	125.1	127.9	129.1	128.3	80- 90	148.1	1165	72.3,72.3
100	104.9	102.4	101.1	101.3	104.2	106.9	108.4	107.8	90-100	125.2	1290	80.1,80.1
110	86.67	84.51	82.95	82.99	85.62	88.15	89.58	89.16	100-110	100.8	1391	86.3,86.3
120	70.59	68.67	67.29	67.20	69.54	71.77	73.03	72.66	110-120	77.49	1469	91.1,91.1
130	56.69	54.97	53.70	53.78	55.84	57.72	58.84	58.48	120-130	56.64	1525	94.7,94.7
140	44.84	43.35	42.35	42.54	44.34	45.96	46.82	46.48	130-140	39.05	1564	97.1,97.1
150	35.10	33.81	33.05	33.33	34.85	36.19	36.82	36.55	140-150	25.00	1589	98.6,98.6
160	26.80	25.57	24.96	25.34	26.74	27.89	28.43	28.11	150-160	14.33	1604	99.5,99.5
170	18.04	17.22	15.82	17.19	18.80	19.98	20.45	19.90	160-170	6.519	1610	99.9,99.9
180	2.780	2.778	2.790	2.780	2.839	2.820	2.808	2.804	170-180	1.234	1611	100,100
DEG	LUMINOUS INTENSITY:cd									UNIT:lm		

Conical surface Flux(90deg): 413.15 lm

%lum = 25.6%

%lamp = 25.6%

Conical surface Flux(130deg): 762.79 lm

%lum = 47.3%

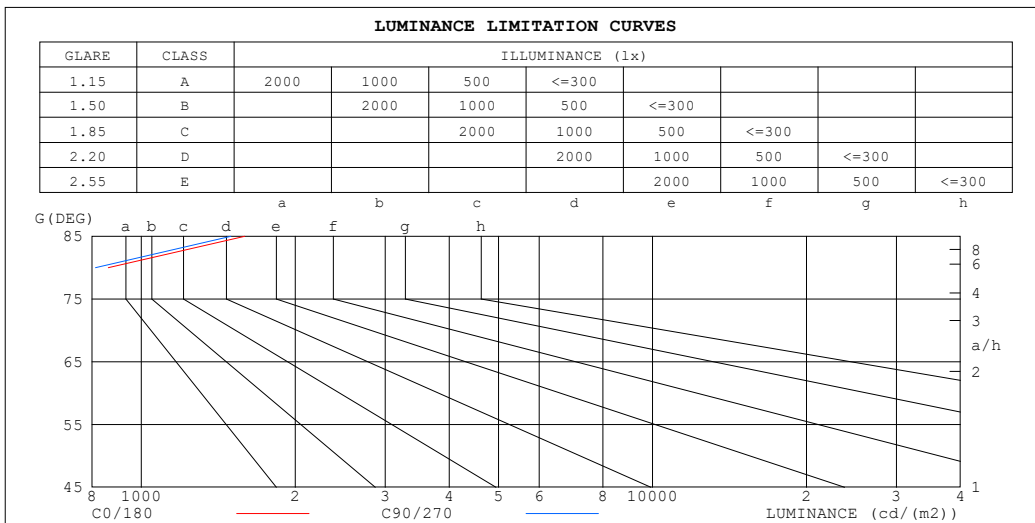
%lamp = 47.3%

C Range: 0 - 360DEG
 C Interval: 22.5DEG
 Test Speed: HIGH
 Temperature:25.3°C
 Operators:DAMIN
 Test Date:2023-11-09

γ Range: 0 - 180DEG
 γ Interval: 5.0DEG
 Test System:EVERFINE GO-2000B_V1 SYSTEM V2.00.473
 Humidity:65.0%
 Test Distance:9.401m [K=1.0000]
 Remarks:

LUMINANCE LIMITATION CURVES

Test:U:220.33V I:0.1204A P:13.515W PF:0.5096 Freq:50.00Hz Lamp Flux:1611.39x1 lm		
NAME: 球泡	TYPE:	WEIGHT:
SPEC.:	DIM.:	SERIAL No.:
MFR.: EVERFINE	SUR.: 1	Shielding Angle:



LUMINANCE cd/(m2)		
G (DEG)	C0/180	C90/270
85	1593	1496
80	861	813
75	619	587
70	499	475
65	427	408
60	380	364
55	347	333
50	322	310
45	302	292

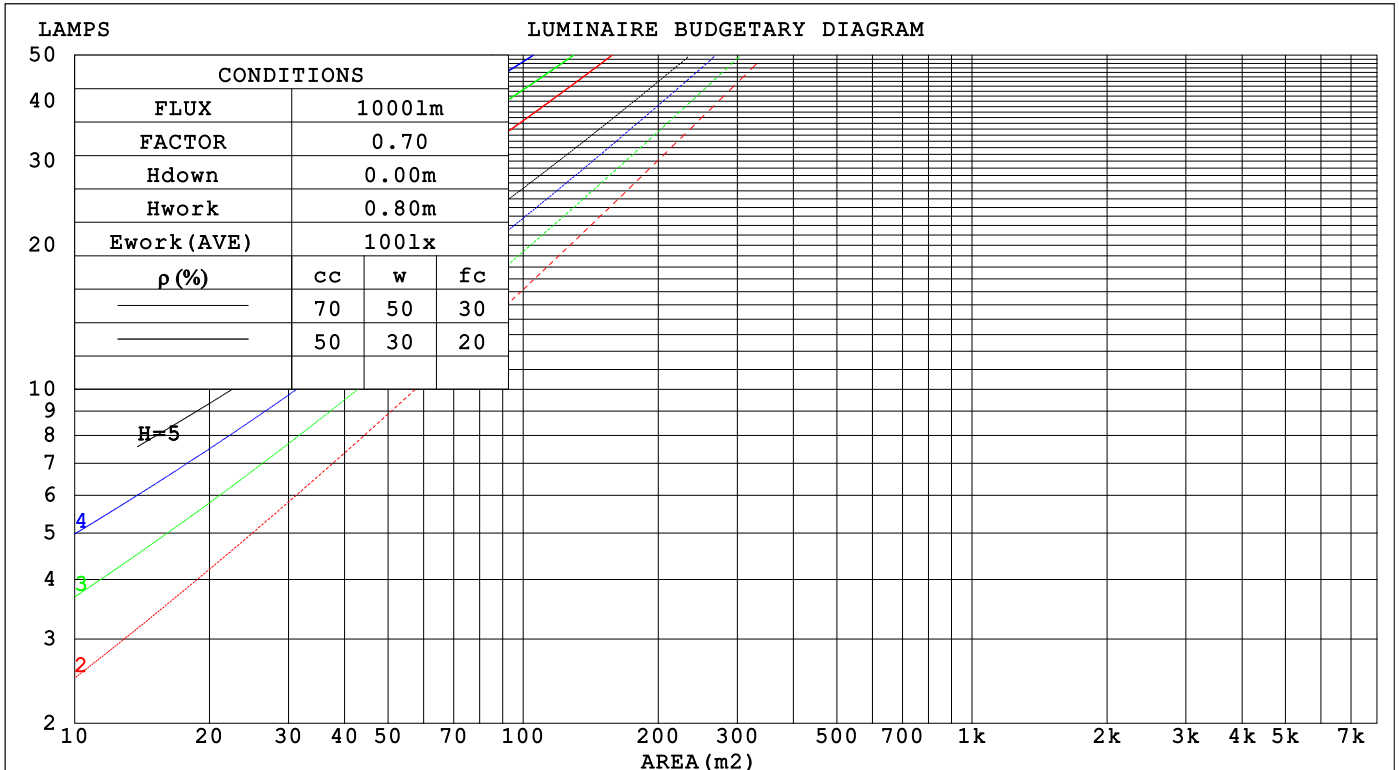
C Range: 0 - 360DEG
 C Interval: 22.5DEG
 Test Speed: HIGH
 Temperature:25.3°C
 Operators:DAMIN
 Test Date:2023-11-09

γ Range: 0 - 180DEG
 γ Interval: 5.0DEG
 Test System:EVERFINE GO-2000B_V1 SYSTEM V2.00.473
 Humidity:65.0%
 Test Distance:9.401m [K=1.0000]
 Remarks:

CU AND LUMINAIRE BUDGETARY ESTIMATE DIAGRAM

Test:U:220.33V I:0.1204A P:13.515W PF:0.5096 Freq:50.00Hz Lamp Flux:1611.39x1 lm		
NAME: 球泡	TYPE:	WEIGHT:
SPEC.:	DIM.:	SERIAL No.:
MFR.: EVERFINE	SUR.: 1	Shielding Angle:

ρ_{cc}	80%			70%			50%			30%			10%			0
ρ_w	50%	30%	10%	50%	30%	10%	50%	30%	10%	50%	30%	10%	50%	30%	10%	0
ρ_{fc}	20%			20%			20%			20%			20%			0
RCR	RCR:Room Cavity Ratio						Coefficients of Utilization(CU)									
0.0	1.12	1.12	1.12	1.07	1.07	1.07	.96	.96	.96	.86	.86	.86	.77	.77	.77	.72
1.0	.92	.86	.81	.87	.82	.77	.77	.73	.70	.69	.66	.63	.61	.58	.56	.52
2.0	.78	.70	.63	.74	.66	.60	.65	.59	.54	.58	.53	.49	.51	.47	.44	.40
3.0	.67	.58	.50	.63	.55	.48	.56	.49	.44	.50	.44	.40	.44	.39	.35	.32
4.0	.59	.49	.42	.55	.47	.40	.49	.42	.36	.44	.38	.33	.38	.33	.29	.26
5.0	.52	.42	.35	.49	.40	.33	.44	.36	.31	.39	.33	.28	.34	.29	.25	.22
6.0	.46	.37	.30	.44	.35	.29	.39	.32	.26	.35	.29	.24	.31	.26	.21	.19
7.0	.42	.32	.26	.39	.31	.25	.35	.28	.23	.31	.25	.21	.28	.23	.19	.16
8.0	.38	.29	.23	.36	.28	.22	.32	.25	.20	.29	.23	.18	.25	.20	.17	.14
9.0	.34	.26	.20	.33	.25	.19	.29	.23	.18	.26	.20	.16	.23	.18	.15	.13
10.0	.31	.23	.18	.30	.22	.17	.27	.20	.16	.24	.19	.15	.22	.17	.13	.11



C Range: 0 - 360DEG
 C Interval: 22.5DEG
 Test Speed: HIGH
 Temperature:25.3°C
 Operators:DAMIN
 Test Date:2023-11-09

γ Range: 0 - 180DEG
 γ Interval: 5.0DEG
 Test System:EVERFINE GO-2000B_V1 SYSTEM V2.00.473
 Humidity:65.0%
 Test Distance:9.401m [K=1.0000]
 Remarks:

WEC AND CCEC

Test:U:220.33V I:0.1204A P:13.515W PF:0.5096 Freq:50.00Hz																	
Lamp Flux:1611.39x1 lm																	
NAME: 球泡						TYPE:						WEIGHT:					
SPEC.:						DIM.:						SERIAL No.:					
MFR.: EVERFINE						SUR.: 1						Shielding Angle:					

ρ_{CC}	80%			70%			50%			30%			10%			0
ρ_w	50%	30%	10%	50%	30%	10%	50%	30%	10%	50%	30%	10%	50%	30%	10%	0
ρ_{fc}	20%			20%			20%			20%			20%			0
RCR	RCR:Room Cavity Ratio						Wall Exitance Coefficients (WEC)									
0.0																
1.0	.411	.234	.074	.395	.225	.072	.366	.210	.067	.339	.195	.063	.314	.182	.059	
2.0	.348	.191	.058	.334	.184	.057	.307	.171	.053	.282	.158	.050	.259	.147	.046	
3.0	.305	.162	.049	.292	.157	.047	.268	.145	.044	.246	.135	.041	.225	.124	.038	
4.0	.273	.142	.042	.261	.137	.040	.239	.127	.038	.218	.117	.035	.199	.108	.033	
5.0	.246	.126	.036	.236	.121	.035	.216	.112	.033	.197	.104	.031	.179	.096	.029	
6.0	.225	.113	.032	.215	.109	.031	.197	.101	.029	.179	.093	.027	.163	.086	.025	
7.0	.207	.102	.029	.198	.099	.028	.181	.091	.026	.165	.084	.025	.150	.078	.023	
8.0	.191	.093	.026	.183	.090	.025	.167	.084	.024	.152	.077	.022	.139	.071	.021	
9.0	.178	.086	.024	.170	.083	.023	.156	.077	.022	.142	.071	.020	.129	.066	.019	
10.0	.166	.080	.022	.159	.077	.021	.146	.071	.020	.133	.066	.019	.121	.061	.017	

ρ_{CC}	80%			70%			50%			30%			10%			0
ρ_w	50%	30%	10%	50%	30%	10%	50%	30%	10%	50%	30%	10%	50%	30%	10%	0
ρ_{fc}	20%			20%			20%			20%			20%			0
RCR	RCR:Room Cavity Ratio						Ceiling Cavity Exitance Coefficients (CCEC)									
0.0	.401	.401	.401	.343	.343	.343	.234	.234	.234	.135	.135	.135	.043	.043	.043	
1.0	.400	.368	.339	.342	.316	.292	.234	.217	.202	.135	.126	.117	.043	.040	.038	
2.0	.394	.346	.305	.337	.298	.264	.231	.206	.184	.133	.120	.108	.043	.039	.035	
3.0	.387	.330	.285	.331	.285	.247	.228	.198	.173	.131	.115	.102	.042	.037	.033	
4.0	.379	.318	.271	.325	.275	.236	.224	.191	.166	.129	.112	.098	.042	.036	.032	
5.0	.371	.308	.262	.319	.267	.228	.220	.186	.161	.127	.109	.095	.041	.036	.031	
6.0	.364	.301	.255	.313	.260	.222	.216	.182	.157	.125	.107	.093	.040	.035	.031	
7.0	.357	.294	.250	.307	.255	.218	.212	.179	.155	.123	.105	.092	.040	.034	.030	
8.0	.350	.289	.247	.301	.250	.215	.208	.176	.153	.121	.104	.091	.039	.034	.030	
9.0	.344	.284	.244	.296	.247	.213	.205	.173	.151	.119	.102	.090	.039	.034	.030	
10.0	.338	.280	.241	.291	.243	.211	.202	.171	.150	.118	.101	.089	.038	.033	.030	

C Range: 0 - 360DEG
 C Interval: 22.5DEG
 Test Speed: HIGH
 Temperature:25.3°C
 Operators:DAMIN
 Test Date:2023-11-09

γ Range: 0 - 180DEG
 γ Interval: 5.0DEG
 Test System:EVERFINE GO-2000B_V1 SYSTEM V2.00.473
 Humidity:65.0%
 Test Distance:9.401m [K=1.0000]
 Remarks:

UGR(Unified Glare Rating) Table

Test:U:220.33V I:0.1204A P:13.515W PF:0.5096 Freq:50.00Hz										
Lamp Flux:1611.39x1 lm										
NAME: 球泡			TYPE:				WEIGHT:			
SPEC.:			DIM.:				SERIAL No.:			
MFR.: EVERFINE			SUR.: 1				Shielding Angle:			
ceiling/cavity	0.7	0.7	0.5	0.5	0.3	0.7	0.7	0.5	0.5	0.3
walls	0.5	0.3	0.5	0.3	0.3	0.5	0.3	0.5	0.3	0.3
working plane	0.2	0.2	0.2	0.2	0.2	0.2	0.2	0.2	0.2	0.2
Room dimensions	Viewed crosswise					Viewed endwise				
x = 2H y = 2H	5.9	7.2	6.5	7.8	8.6	5.7	7.0	6.3	7.6	8.4
3H	8.6	9.8	9.2	10.5	11.3	8.4	9.6	9.0	10.2	11.0
4H	10.1	11.2	10.8	11.9	12.7	9.8	11.0	10.5	11.7	12.5
6H	11.8	12.8	12.5	13.5	14.4	11.5	12.5	12.2	13.2	14.1
8H	12.7	13.7	13.4	14.4	15.3	12.4	13.4	13.1	14.1	15.0
12H	13.8	14.8	14.5	15.5	16.3	13.4	14.4	14.1	15.1	16.0
4H 2H	6.7	7.8	7.3	8.5	9.3	6.5	7.7	7.2	8.4	9.2
3H	9.6	10.6	10.3	11.3	12.2	9.4	10.4	10.1	11.1	12.0
4H	11.3	12.2	12.0	12.9	13.8	11.0	12.0	11.8	12.7	13.6
6H	13.1	13.9	13.9	14.7	15.6	12.8	13.7	13.6	14.4	15.4
8H	14.1	14.9	14.9	15.7	16.6	13.8	14.6	14.6	15.4	16.3
12H	15.3	16.0	16.1	16.8	17.8	15.0	15.7	15.8	16.5	17.5
8H 4H	11.8	12.6	12.6	13.4	14.3	11.7	12.4	12.4	13.2	14.2
6H	14.0	14.6	14.8	15.4	16.4	13.7	14.4	14.5	15.2	16.2
8H	15.2	15.8	16.0	16.6	17.6	14.9	15.5	15.8	16.3	17.3
12H	16.6	17.1	17.4	17.9	19.0	16.3	16.8	17.1	17.7	18.7
12H 4H	12.0	12.7	12.8	13.5	14.4	11.8	12.5	12.6	13.3	14.3
6H	14.2	14.8	15.0	15.6	16.6	14.0	14.6	14.8	15.4	16.4
8H	15.5	16.1	16.4	16.9	17.9	15.3	15.8	16.2	16.7	17.7
Variations with the observer position at spacings(CIE Pub.117):										
S = 1.0H	+ 0.1 / - 0.1					+ 0.1 / - 0.1				
1.5H	+ 0.2 / - 0.3					+ 0.2 / - 0.3				
2.0H	+ 0.3 / - 0.4					+ 0.3 / - 0.4				

CIE Pub.117, 1611 lm Total Lamp Luminous Flux Correct (8log(F/F0) = 1.7)
Area: 1 m2

C Range: 0 - 360DEG
C Interval: 22.5DEG
Test Speed: HIGH
Temperature:25.3°C
Operators:DAMIN
Test Date:2023-11-09

γ Range: 0 - 180DEG
γ Interval: 5.0DEG
Test System:EVERFINE GO-2000B_V1 SYSTEM V2.00.473
Humidity:65.0%
Test Distance:9.401m [K=1.0000]
Remarks:

UTILIZATION FACTORS TABLE

Test:U:220.33V I:0.1204A P:13.515W PF:0.5096 Freq:50.00Hz Lamp Flux:1611.39x1 lm		
NAME: 球泡	TYPE:	WEIGHT:
SPEC.:	DIM.:	SERIAL No.:
MFR.: EVERFINE	SUR.: 1	Shielding Angle:

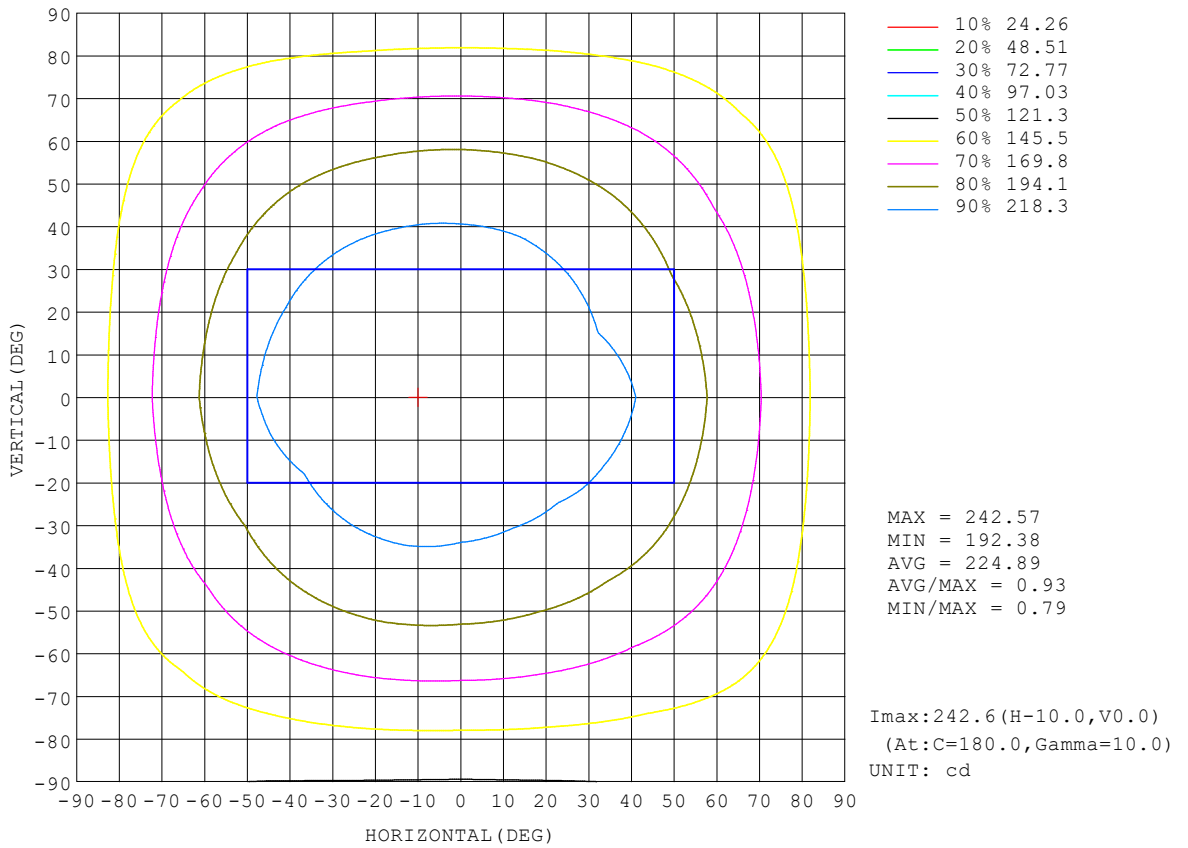
REFLECTANCE										
Ceiling	0.8	0.8	0.8	0.7	0.7	0.7	0.5	0.5	0.5	0
Walls	0.7	0.5	0.3	0.7	0.5	0.3	0.7	0.5	0.3	0
Working plane	0.2	0.2	0.2	0.2	0.2	0.2	0.2	0.2	0.2	0
ROOM INDEX	UTILIZATION FACTORS (PERCENT) $k(RI) \times RCR = 5$									
k = 0.60	43	30	23	41	30	22	39	28	22	15
0.80	52	38	30	50	37	29	46	35	28	20
1.00	59	45	37	57	44	36	53	44	34	25
1.25	66	53	43	63	51	42	58	48	40	29
1.50	71	58	49	68	56	48	62	52	45	33
2.00	79	67	58	75	64	56	68	59	52	38
2.50	84	72	64	80	69	61	72	64	57	42
3.00	88	77	69	83	74	66	75	68	61	46
4.00	93	84	76	88	80	73	79	73	67	50
5.00	96	88	82	91	84	78	82	76	71	53
ROOM INDEX	UF(total)									Direct
According to DIN EN 13032-2 2004			Suspended				SHRNOM = 1.25			

C Range: 0 - 360DEG
 C Interval: 22.5DEG
 Test Speed: HIGH
 Temperature:25.3°C
 Operators:DAMIN
 Test Date:2023-11-09

γ Range: 0 - 180DEG
 γ Interval: 5.0DEG
 Test System:EVERFINE GO-2000B_V1 SYSTEM V2.00.473
 Humidity:65.0%
 Test Distance:9.401m [K=1.0000]
 Remarks:

ISOCANDELA DIAGRAM

Test:U:220.33V I:0.1204A P:13.515W PF:0.5096 Freq:50.00Hz Lamp Flux:1611.39x1 lm		
NAME: 球泡	TYPE:	WEIGHT:
SPEC.:	DIM.:	SERIAL No.:
MFR.: EVERFINE	SUR.: 1	Shielding Angle:

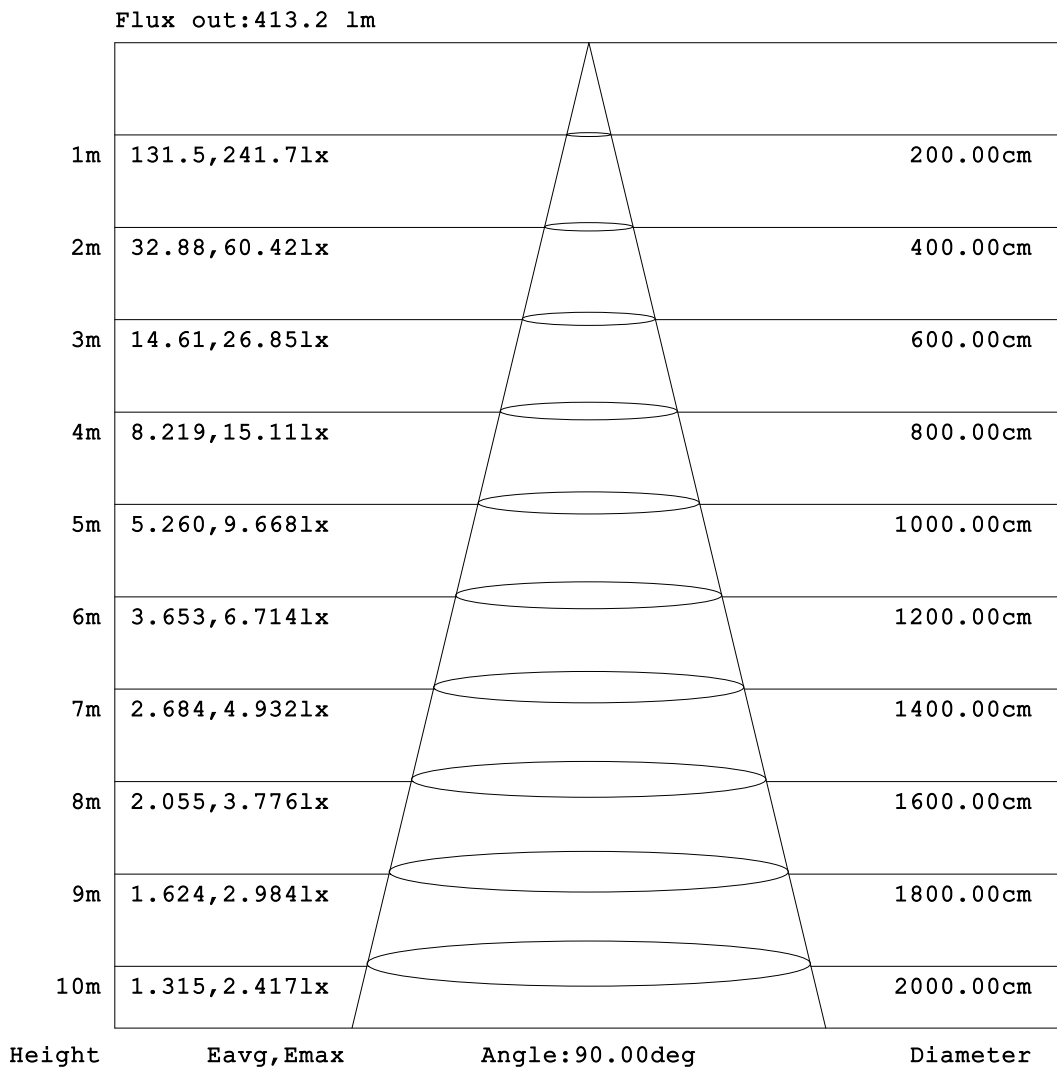


C Range: 0 - 360DEG
C Interval: 22.5DEG
Test Speed: HIGH
Temperature:25.3°C
Operators:DAMIN
Test Date:2023-11-09

γ Range: 0 - 180DEG
γ Interval: 5.0DEG
Test System:EVERFINE GO-2000B_V1 SYSTEM V2.00.473
Humidity:65.0%
Test Distance:9.401m [K=1.0000]
Remarks:

AAI Figure

Test:U:220.33V I:0.1204A P:13.515W PF:0.5096 Freq:50.00Hz Lamp Flux:1611.39x1 lm		
NAME: 球泡	TYPE:	WEIGHT:
SPEC.:	DIM.:	SERIAL No.:
MFR.: EVERFINE	SUR.: 1	Shielding Angle:



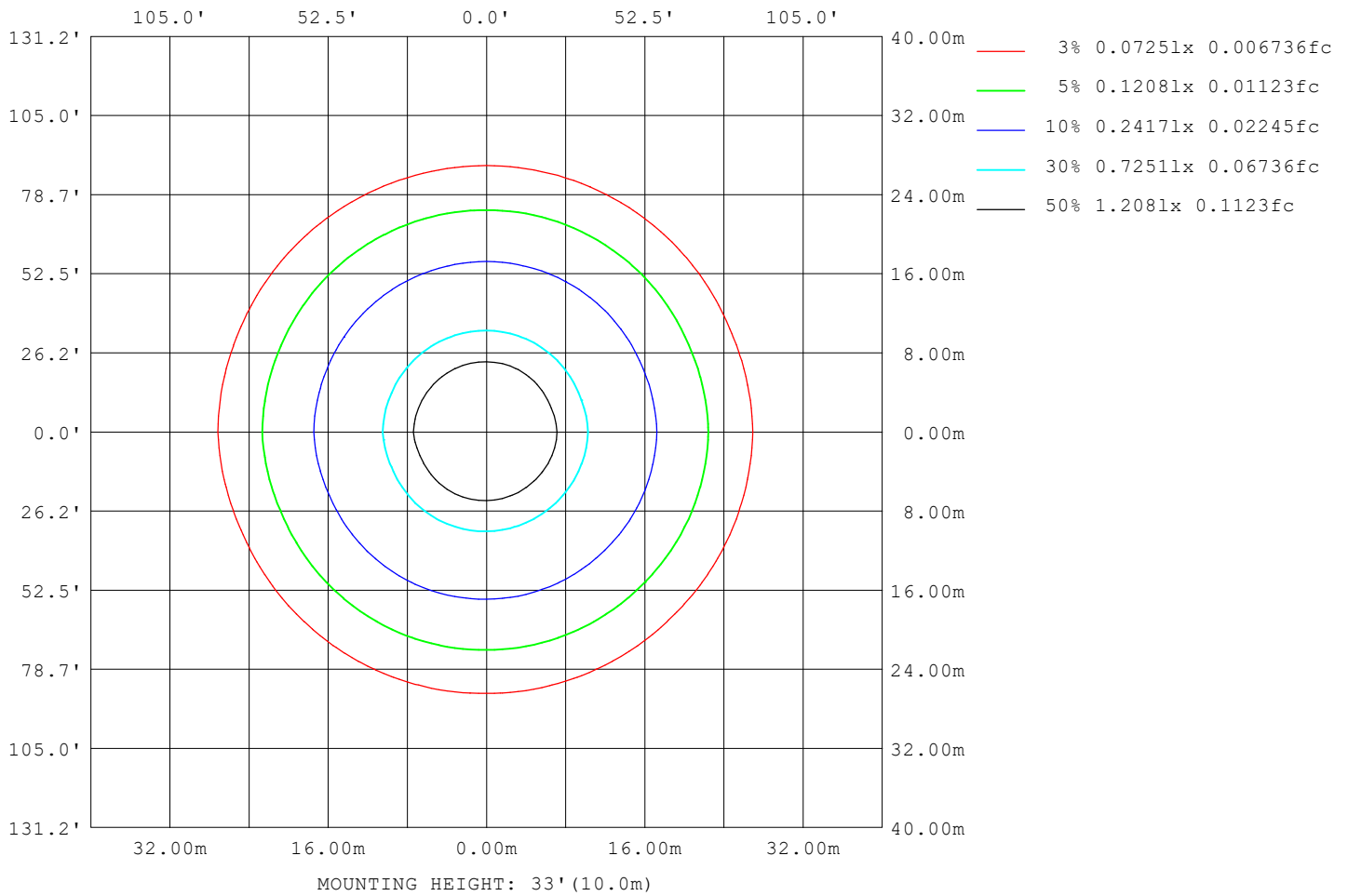
Note:The Curves indicate the illuminated area and the average illumination when the luminaire is at different distance.

C Range: 0 - 360DEG
C Interval: 22.5DEG
Test Speed: HIGH
Temperature:25.3°C
Operators:DAMIN
Test Date:2023-11-09

γ Range: 0 - 180DEG
γ Interval: 5.0DEG
Test System:EVERFINE GO-2000B_V1 SYSTEM V2.00.473
Humidity:65.0%
Test Distance:9.401m [K=1.0000]
Remarks:

ISOLUX DIAGRAM

Test:U:220.33V I:0.1204A P:13.515W PF:0.5096 Freq:50.00Hz Lamp Flux:1611.39x1 lm		
NAME: 球泡	TYPE:	WEIGHT:
SPEC.:	DIM.:	SERIAL No.:
MFR.: EVERFINE	SUR.: 1	Shielding Angle:



C Range: 0 - 360DEG
C Interval: 22.5DEG
Test Speed: HIGH
Temperature:25.3°C
Operators:DAMIN
Test Date:2023-11-09

γ Range: 0 - 180DEG
γ Interval: 5.0DEG
Test System:EVERFINE GO-2000B_V1 SYSTEM V2.00.473
Humidity:65.0%
Test Distance:9.401m [K=1.0000]
Remarks:

LED Avg.L Report

Test:U:220.33V I:0.1204A P:13.515W PF:0.5096 Freq:50.00Hz Lamp Flux:1611.39x1 lm		
NAME: 球泡	TYPE:	WEIGHT:
SPEC.:	DIM.:	SERIAL No.:
MFR.: EVERFINE	SUR.: 1	Shielding Angle:

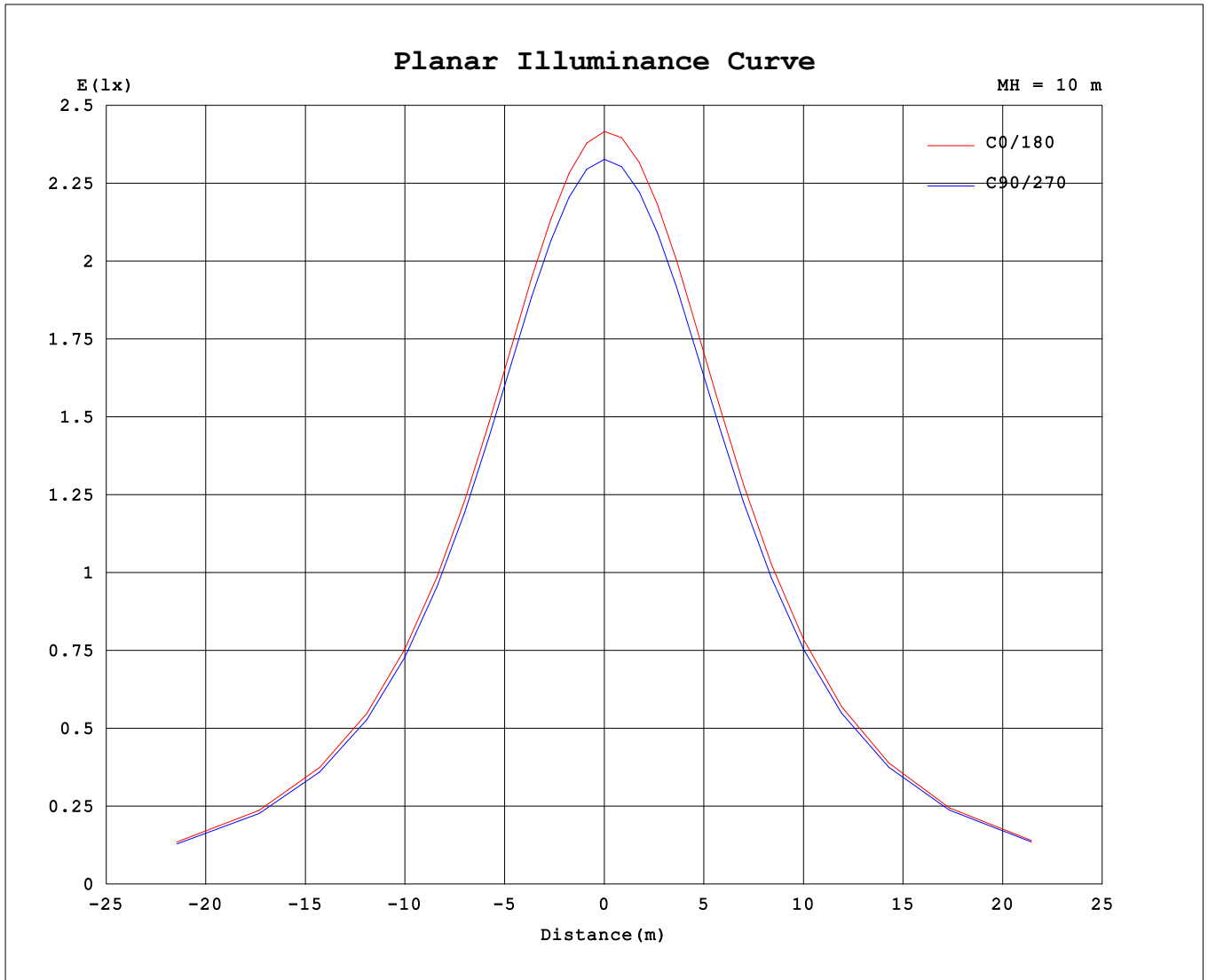
AvgL	cd/m2
L_0~180 (65) av	422
L_0~180 (75) av	608
L_0~180 (85) av	1556
L_90~270 (65) av	422
L_90~270 (75) av	609
L_90~270 (85) av	1559
L_45 (65) av	422
L_45 (75) av	608
L_45 (85) av	1558

Standard: GB/T 29293-2012

C Range: 0 - 360DEG
 C Interval: 22.5DEG
 Test Speed: HIGH
 Temperature:25.3℃
 Operators:DAMIN
 Test Date:2023-11-09

γ Range: 0 - 180DEG
 γ Interval: 5.0DEG
 Test System:EVERFINE GO-2000B_V1 SYSTEM V2.00.473
 Humidity:65.0%
 Test Distance:9.401m [K=1.0000]
 Remarks:

Planar Illuminance Curve



C Range: 0 - 360DEG
 C Interval: 22.5DEG
 Test Speed: HIGH
 Temperature: 25.3°C
 Operators: DAMIN
 Test Date: 2023-11-09

γ Range: 0 - 180DEG
 γ Interval: 5.0DEG
 Test System: EVERFINE GO-2000B_V1 SYSTEM V2.00.473
 Humidity: 65.0%
 Test Distance: 9.401m [K=1.0000]
 Remarks:

LUMINOUS DISTRIBUTION INTENSITY DATA

Test:U:220.33V I:0.1204A P:13.515W PF:0.5096 Freq:50.00Hz Lamp Flux:1611.39x1 lm		
NAME: 球泡	TYPE:	WEIGHT:
SPEC.:	DIM.:	SERIAL No.:
MFR.: EVERFINE	SUR.: 1	Shielding Angle:

Table--1

UNIT: cd

C (DEG) \ γ (DEG)	0	22.5	45	67.5	90	112.5	135	157.5	180	202.5	225	247.5	270	292.5	315	337.5			
0	235	235	235	235	235	235	235	235	235	235	235	235	235	235	235	235			
5	234	234	234	234	234	234	235	235	236	236	236	235	235	235	234	234			
10	232	232	232	232	233	234	235	235	236	236	236	235	235	234	234	233			
15	230	230	230	230	231	232	234	234	235	235	235	235	234	233	232	231			
20	228	228	227	228	229	231	232	233	234	234	234	234	233	232	231	229			
25	225	225	225	225	227	228	230	231	233	233	233	232	231	230	228	227			
30	222	222	221	222	224	225	227	229	230	230	230	229	229	227	226	224			
35	218	218	217	218	220	222	224	225	227	227	227	226	225	224	222	220			
40	213	213	212	213	214	216	219	220	222	222	223	222	221	219	218	216			
45	208	207	206	207	208	210	213	214	216	216	217	216	216	214	212	210			
50	201	200	199	199	201	203	205	207	209	209	210	209	209	207	206	204			
55	193	192	191	191	193	195	197	199	201	201	202	201	201	200	198	196			
60	185	184	182	183	184	186	187	189	191	191	193	192	192	191	190	188			
65	176	175	173	173	174	176	177	179	181	181	183	183	183	182	181	178			
70	166	165	163	163	164	165	167	168	170	171	172	172	173	172	171	168			
75	156	155	153	153	153	154	155	157	159	159	161	161	162	161	160	158			
80	145	145	143	142	143	143	144	146	148	148	150	150	151	150	150	148			
85	135	134	132	132	132	132	133	134	136	137	139	139	140	139	139	137			
90	125	124	122	122	121	122	122	123	125	126	128	128	129	129	128	127			
95	115	114	112	111	111	111	111	113	114	115	117	118	119	118	118	117			
100	105	104	102	102	101	101	101	102	104	105	107	107	108	108	108	107			
105	95.5	95.1	93.2	92.5	91.7	91.6	91.8	92.9	94.6	95.3	97.3	97.8	98.6	98.5	98.3	97.2			
110	86.7	86.3	84.5	83.8	83.0	82.7	83.0	84.0	85.6	86.2	88.1	88.7	89.6	89.4	89.2	88.2			
115	78.4	78.0	76.3	75.6	74.8	74.6	74.8	75.7	77.2	77.8	79.7	80.2	81.0	80.9	80.6	79.8			
120	70.6	70.3	68.7	67.9	67.3	67.0	67.2	68.1	69.5	70.1	71.8	72.3	73.0	72.9	72.7	71.9			
125	63.4	63.0	61.6	60.8	60.2	59.9	60.2	61.1	62.4	63.0	64.5	65.0	65.6	65.6	65.3	64.6			
130	56.7	56.3	55.0	54.3	53.7	53.5	53.8	54.6	55.8	56.4	57.7	58.2	58.8	58.7	58.5	57.9			
135	50.5	50.2	48.9	48.4	47.7	47.7	47.9	48.7	49.9	50.3	51.6	52.0	52.6	52.4	52.3	51.5			
140	44.8	44.6	43.4	42.9	42.3	42.3	42.5	43.3	44.3	44.8	46.0	46.3	46.8	46.7	46.5	45.8			
145	39.7	39.5	38.3	37.9	37.5	37.4	37.7	38.4	39.4	39.7	40.8	41.1	41.6	41.4	41.3	40.6			
150	35.1	34.9	33.8	33.4	33.0	33.1	33.3	34.0	34.9	35.2	36.2	36.4	36.8	36.7	36.5	35.9			
155	30.8	30.5	29.5	29.1	28.9	29.0	29.2	29.9	30.7	31.0	31.9	32.1	32.5	32.4	32.2	31.6			
160	26.8	26.5	25.6	25.1	25.0	25.0	25.3	26.0	26.7	27.1	27.9	28.1	28.4	28.3	28.1	27.6			
165	22.8	22.5	21.5	21.2	20.6	20.9	21.4	22.1	22.9	23.3	24.0	24.2	24.6	24.4	24.2	23.4			
170	18.0	18.0	17.2	16.7	15.8	16.4	17.2	18.0	18.8	19.2	20.0	20.2	20.4	20.3	19.9	18.9			
175	9.68	8.94	7.92	8.15	9.01	9.96	10.7	12.0	11.0	11.9	13.0	13.7	14.2	14.1	13.9	13.2			
180	2.78	2.83	2.78	2.79	2.79	2.78	2.78	2.78	2.84	2.79	2.82	2.80	2.81	2.80	2.80	2.79			

C Range: 0 - 360DEG
 C Interval: 22.5DEG
 Test Speed: HIGH
 Temperature:25.3℃
 Operators:DAMIN
 Test Date:2023-11-09

γ Range: 0 - 180DEG
 γ Interval: 5.0DEG
 Test System:EVERFINE GO-2000B_V1 SYSTEM V2.00.473
 Humidity:65.0%
 Test Distance:9.401m [K=1.0000]
 Remarks: