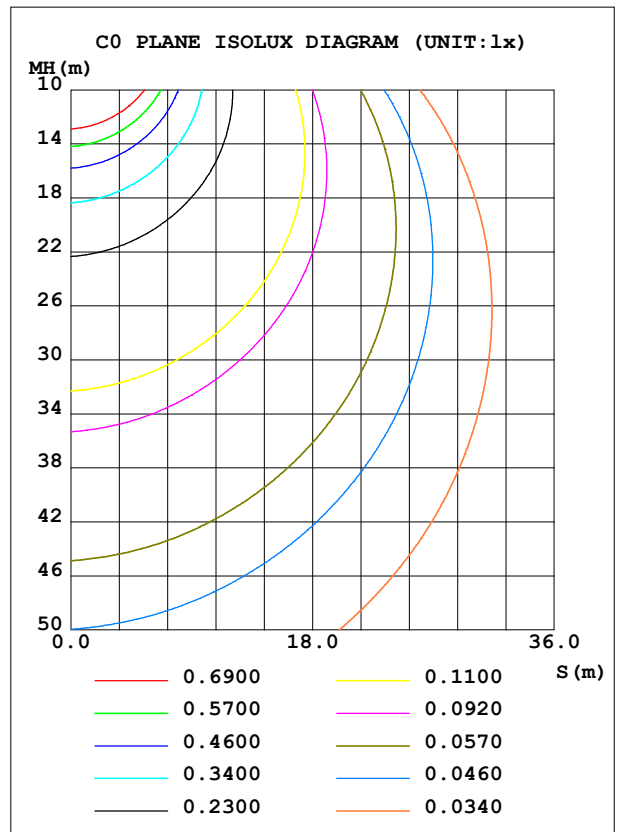
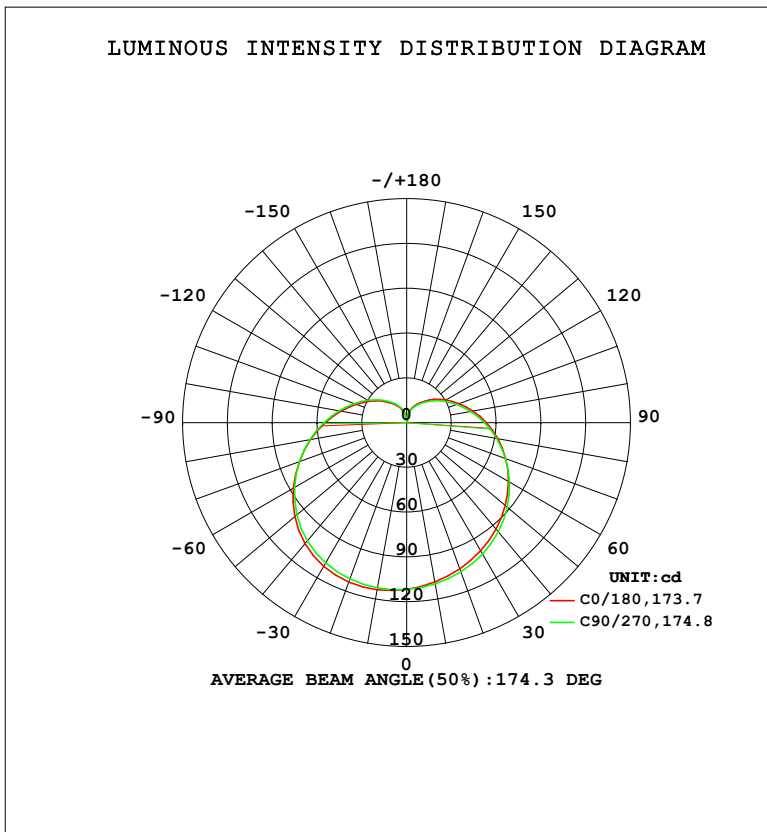


LUMINAIRE PHOTOMETRIC TEST REPORT

Test:U:220.33V I:0.0576A P:6.8073W PF:0.5366 Freq:50.00Hz Lamp Flux:711.311x1 lm		
NAME: 球泡	TYPE:	WEIGHT:
SPEC.:	DIM.:	SERIAL No.:
MFR.: EVERFINE	SUR.: 1	Shielding Angle:

DATA OF LAMP		PHOTOMETRIC DATA			
MODEL	A60	Imax (cd)	114.2	S/MH (C0/180)	1.49
NOMINAL POWER (W)	7	LOR (%)	100.0	S/MH (C90/270)	1.46
RATED VOLTAGE (V)	220	TOTAL FLUX (lm)	711.31	η UP, DN (C0-180)	13.1, 35.8
NOMINAL FLUX (lm)	711.311	CIE CLASS	SEMI-D.	η UP, DN (C180-360)	13.4, 37.8
LAMPS INSIDE	1	η up (%)	26.5	CIBSE SHR NOM	1.50
TEST VOLTAGE (V)	219.5	η down (%)	73.5	CIBSE SHR MAX	1.55



C Range: 0 - 360DEG
 C Interval: 22.5DEG
 Test Speed: HIGH
 Temperature: 25.3°C
 Operators: DAMIN
 Test Date: 2023-11-09

γ Range: 0 - 180DEG
 γ Interval: 5.0DEG
 Test System: EVERFINE GO-2000B_V1 SYSTEM V2.00.473
 Humidity: 65.0%
 Test Distance: 9.401m [K=1.0000]
 Remarks:

ZONAL FLUX DIAGRAM

ZONAL FLUX DIAGRAM:

γ	C0	C45	C90	C135	C180	C225	C270	C315	γ	Φ zone	Φ total	%lum,lamp
10	108.6	108.3	109.7	111.8	113.6	113.8	112.3	110.1	0- 10	10.63	10.63	1.49,1.49
20	104.2	104.1	106.4	110.2	113.6	114.0	111.4	107.2	10- 20	31.17	41.80	5.88,5.88
30	99.16	99.09	101.7	106.7	111.2	111.9	108.6	103.1	20- 30	49.56	91.36	12.8,12.8
40	93.20	93.17	95.57	100.7	105.9	107.2	103.5	97.35	30- 40	64.34	155.7	21.9,21.9
50	86.34	86.28	88.06	92.62	97.77	99.41	96.01	90.11	40- 50	74.23	229.9	32.3,32.3
60	78.70	78.61	79.54	82.99	87.66	89.49	86.72	81.74	50- 60	78.61	308.5	43.4,43.4
70	70.63	70.45	70.52	72.84	76.60	78.41	76.45	72.93	60- 70	77.78	386.3	54.3,54.3
80	62.13	61.83	61.27	62.60	65.35	67.00	65.82	63.70	70- 80	72.58	458.9	64.5,64.5
90	53.48	53.12	52.11	52.62	54.51	55.89	55.43	54.55	80- 90	64.15	523.0	73.5,73.5
100	45.22	44.80	43.59	43.51	44.75	45.89	45.91	45.78	90-100	53.89	576.9	81.1,81.1
110	37.54	37.08	35.84	35.35	36.21	37.15	37.46	37.83	100-110	43.20	620.1	87.2,87.2
120	30.56	30.11	28.97	28.38	28.88	29.65	30.11	30.68	110-120	32.96	653.1	91.8,91.8
130	24.37	23.93	22.98	22.36	22.70	23.30	23.81	24.38	120-130	23.83	676.9	95.2,95.2
140	19.02	18.61	17.83	17.32	17.53	18.01	18.52	19.05	130-140	16.16	693.1	97.4,97.4
150	14.47	14.12	13.51	13.13	13.28	13.67	14.14	14.58	140-150	10.09	703.2	98.9,98.9
160	10.43	10.14	9.648	9.399	9.553	9.931	10.34	10.64	150-160	5.561	708.7	99.6,99.6
170	5.488	4.502	4.544	4.804	5.510	5.980	6.339	6.410	160-170	2.292	711.0	100,100
180	1.255	1.248	1.239	1.237	1.272	1.260	1.257	1.256	170-180	0.2889	711.3	100,100
DEG	LUMINOUS INTENSITY:cd									UNIT:lm		

Conical surface Flux(90deg): 191.92 lm

%lum = 27.0%

%lamp = 27.0%

Conical surface Flux(130deg): 347.83 lm

%lum = 48.9%

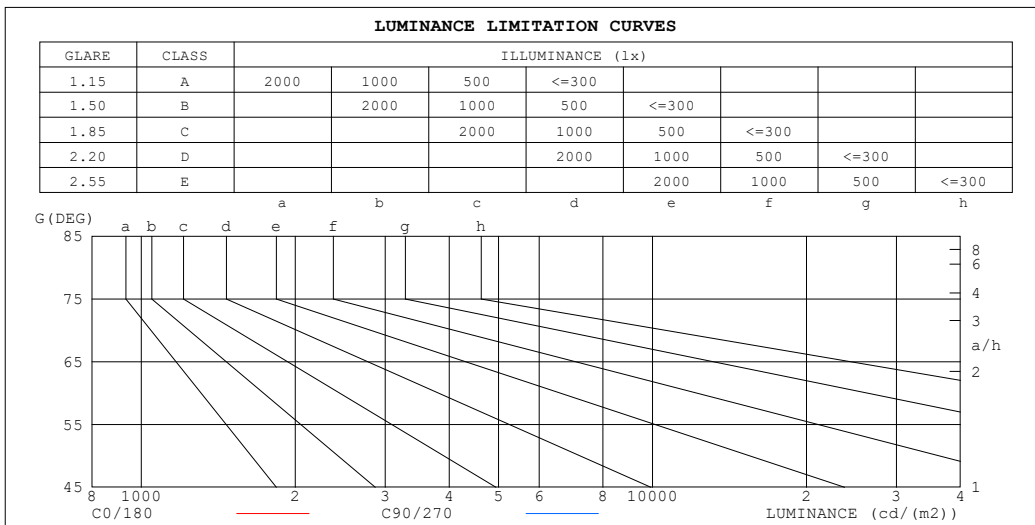
%lamp = 48.9%

C Range: 0 - 360DEG
 C Interval: 22.5DEG
 Test Speed: HIGH
 Temperature:25.3°C
 Operators:DAMIN
 Test Date:2023-11-09

γ Range: 0 - 180DEG
 γ Interval: 5.0DEG
 Test System:EVERFINE GO-2000B_V1 SYSTEM V2.00.473
 Humidity:65.0%
 Test Distance:9.401m [K=1.0000]
 Remarks:

LUMINANCE LIMITATION CURVES

Test:U:220.33V I:0.0576A P:6.8073W PF:0.5366 Freq:50.00Hz Lamp Flux:711.311x1 lm		
NAME: 球泡	TYPE:	WEIGHT:
SPEC.:	DIM.:	SERIAL No.:
MFR.: EVERFINE	SUR.: 1	Shielding Angle:



LUMINANCE cd/(m2)		
G (DEG)	C0/180	C90/270
85	681	645
80	367	350
75	263	252
70	212	204
65	182	176
60	162	158
55	148	145
50	138	136
45	131	129

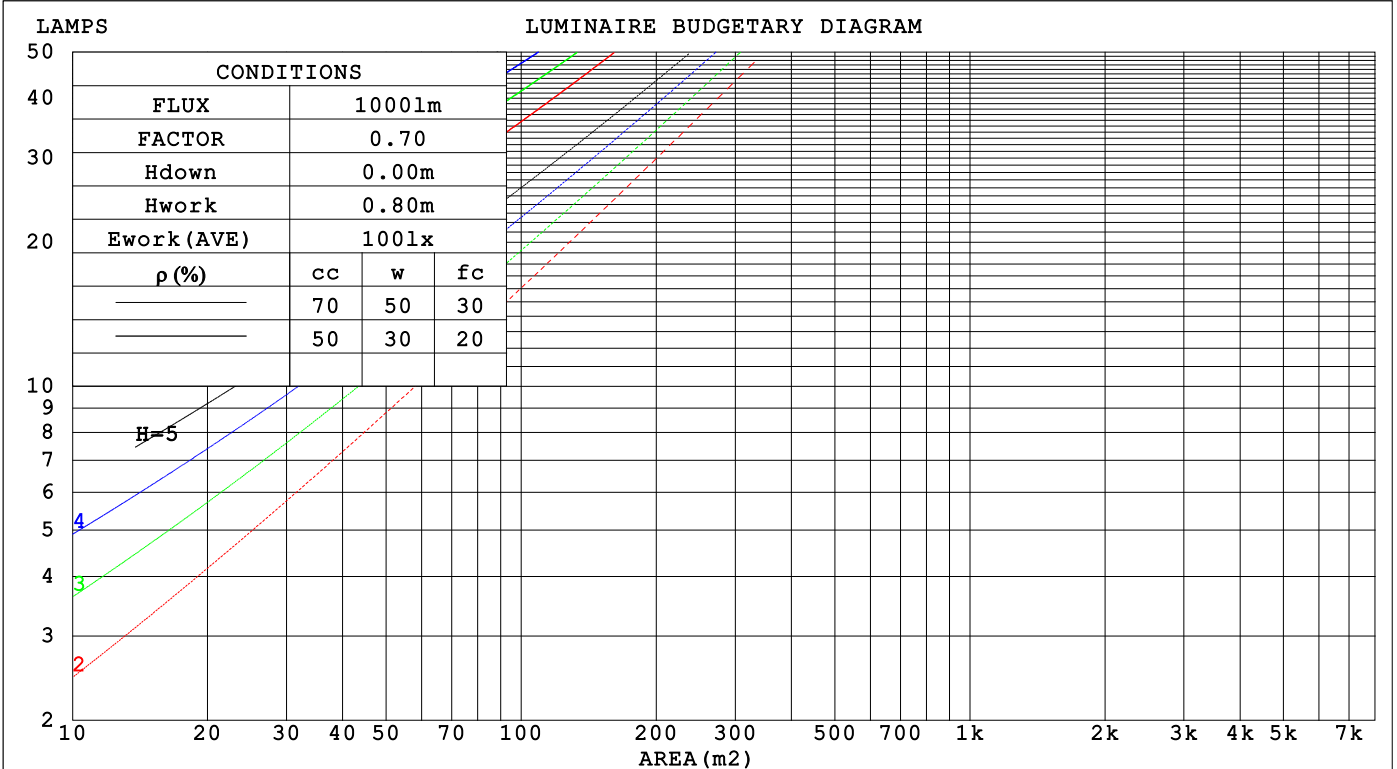
C Range: 0 - 360DEG
 C Interval: 22.5DEG
 Test Speed: HIGH
 Temperature:25.3°C
 Operators:DAMIN
 Test Date:2023-11-09

γ Range: 0 - 180DEG
 γ Interval: 5.0DEG
 Test System:EVERFINE GO-2000B_V1 SYSTEM V2.00.473
 Humidity:65.0%
 Test Distance:9.401m [K=1.0000]
 Remarks:

CU AND LUMINAIRE BUDGETARY ESTIMATE DIAGRAM

Test:U:220.33V I:0.0576A P:6.8073W PF:0.5366 Freq:50.00Hz Lamp Flux:711.311x1 lm		
NAME: 球泡	TYPE:	WEIGHT:
SPEC.:	DIM.:	SERIAL No.:
MFR.: EVERFINE	SUR.: 1	Shielding Angle:

ρ_{cc}	80%			70%			50%			30%			10%			0
ρ_w	50%	30%	10%	50%	30%	10%	50%	30%	10%	50%	30%	10%	50%	30%	10%	0
ρ_{fc}	20%			20%			20%			20%			20%			0
RCR	RCR:Room Cavity Ratio						Coefficients of Utilization(CU)									
0.0	1.13	1.13	1.13	1.07	1.07	1.07	.96	.96	.96	.87	.87	.87	.78	.78	.78	.74
1.0	.92	.87	.82	.87	.82	.78	.78	.74	.70	.70	.67	.64	.62	.59	.57	.53
2.0	.78	.70	.63	.74	.67	.61	.66	.60	.55	.59	.54	.50	.52	.48	.45	.41
3.0	.68	.58	.51	.64	.56	.49	.57	.50	.45	.51	.45	.40	.45	.40	.37	.33
4.0	.59	.50	.42	.56	.47	.40	.50	.43	.37	.45	.39	.34	.39	.35	.30	.27
5.0	.52	.43	.36	.50	.41	.34	.44	.37	.31	.40	.33	.29	.35	.30	.26	.23
6.0	.47	.37	.30	.44	.36	.29	.40	.32	.27	.36	.29	.25	.32	.26	.22	.20
7.0	.42	.33	.26	.40	.31	.25	.36	.29	.23	.32	.26	.21	.29	.23	.20	.17
8.0	.38	.29	.23	.36	.28	.22	.33	.26	.21	.29	.23	.19	.26	.21	.17	.15
9.0	.35	.26	.21	.33	.25	.20	.30	.23	.18	.27	.21	.17	.24	.19	.15	.13
10.0	.32	.24	.18	.30	.23	.18	.28	.21	.16	.25	.19	.15	.22	.17	.14	.12



C Range: 0 - 360DEG
 C Interval: 22.5DEG
 Test Speed: HIGH
 Temperature:25.3°C
 Operators:DAMIN
 Test Date:2023-11-09

γ Range: 0 - 180DEG
 γ Interval: 5.0DEG
 Test System:EVERFINE GO-2000B_V1 SYSTEM V2.00.473
 Humidity:65.0%
 Test Distance:9.401m [K=1.0000]
 Remarks:

WEC AND CCEC

Test:U:220.33V I:0.0576A P:6.8073W PF:0.5366 Freq:50.00Hz								
Lamp Flux:711.311x1 lm								
NAME: 球泡			TYPE:			WEIGHT:		
SPEC.:			DIM.:			SERIAL No.:		
MFR.: EVERFINE			SUR.: 1			Shielding Angle:		

ρ_{CC}	80%			70%			50%			30%			10%			0
ρ_w	50%	30%	10%	50%	30%	10%	50%	30%	10%	50%	30%	10%	50%	30%	10%	0
ρ_{fc}	20%			20%			20%			20%			20%			0
RCR	RCR:Room Cavity Ratio						Wall Exitance Coefficients (WEC)									
0.0																
1.0	.407	.232	.073	.392	.224	.071	.363	.208	.067	.337	.194	.062	.313	.181	.058	
2.0	.346	.189	.058	.332	.183	.056	.306	.170	.053	.282	.158	.049	.259	.147	.046	
3.0	.304	.162	.048	.291	.156	.047	.268	.145	.044	.246	.135	.041	.225	.125	.039	
4.0	.272	.141	.041	.260	.136	.040	.239	.127	.038	.219	.117	.035	.200	.109	.033	
5.0	.246	.125	.036	.235	.121	.035	.216	.112	.033	.197	.104	.031	.180	.096	.029	
6.0	.224	.112	.032	.215	.108	.031	.197	.101	.029	.180	.093	.027	.164	.086	.026	
7.0	.206	.102	.029	.198	.098	.028	.181	.091	.026	.165	.085	.025	.151	.078	.023	
8.0	.191	.093	.026	.183	.090	.025	.168	.084	.024	.153	.078	.022	.140	.072	.021	
9.0	.178	.086	.024	.170	.083	.023	.156	.077	.022	.143	.072	.020	.130	.066	.019	
10.0	.166	.080	.022	.159	.077	.021	.146	.071	.020	.134	.066	.019	.122	.061	.018	

ρ_{CC}	80%			70%			50%			30%			10%			0
ρ_w	50%	30%	10%	50%	30%	10%	50%	30%	10%	50%	30%	10%	50%	30%	10%	0
ρ_{fc}	20%			20%			20%			20%			20%			0
RCR	RCR:Room Cavity Ratio						Ceiling Cavity Exitance Coefficients (CCEC)									
0.0	.392	.392	.392	.335	.335	.335	.229	.229	.229	.131	.131	.131	.042	.042	.042	
1.0	.390	.359	.330	.334	.308	.284	.228	.212	.196	.132	.123	.114	.042	.039	.037	
2.0	.384	.336	.296	.329	.290	.256	.225	.200	.179	.130	.117	.105	.042	.038	.034	
3.0	.377	.320	.275	.323	.276	.239	.222	.192	.167	.128	.112	.099	.041	.036	.032	
4.0	.369	.308	.262	.317	.266	.227	.218	.186	.160	.126	.109	.095	.041	.035	.031	
5.0	.361	.299	.252	.310	.258	.220	.214	.180	.155	.124	.106	.092	.040	.035	.030	
6.0	.354	.291	.246	.304	.252	.214	.210	.176	.151	.122	.104	.090	.039	.034	.030	
7.0	.347	.284	.241	.298	.247	.210	.206	.173	.149	.120	.102	.088	.039	.033	.029	
8.0	.340	.279	.237	.293	.242	.207	.203	.170	.147	.118	.100	.087	.038	.033	.029	
9.0	.334	.274	.234	.288	.238	.204	.199	.167	.145	.116	.099	.086	.038	.032	.029	
10.0	.328	.270	.232	.283	.235	.202	.196	.165	.144	.114	.098	.086	.037	.032	.028	

C Range: 0 - 360DEG
 C Interval: 22.5DEG
 Test Speed: HIGH
 Temperature:25.3°C
 Operators:DAMIN
 Test Date:2023-11-09

γ Range: 0 - 180DEG
 γ Interval: 5.0DEG
 Test System:EVERFINE GO-2000B_V1 SYSTEM V2.00.473
 Humidity:65.0%
 Test Distance:9.401m [K=1.0000]
 Remarks:

UGR(Unified Glare Rating) Table

Test:U:220.33V I:0.0576A P:6.8073W PF:0.5366 Freq:50.00Hz										
Lamp Flux:711.311x1 lm										
NAME: 球泡			TYPE:				WEIGHT:			
SPEC.:			DIM.:				SERIAL No.:			
MFR.: EVERFINE			SUR.: 1				Shielding Angle:			
ceiling/cavity	0.7	0.7	0.5	0.5	0.3	0.7	0.7	0.5	0.5	0.3
walls	0.5	0.3	0.5	0.3	0.3	0.5	0.3	0.5	0.3	0.3
working plane	0.2	0.2	0.2	0.2	0.2	0.2	0.2	0.2	0.2	0.2
Room dimensions	Viewed crosswise					Viewed endwise				
x = 2H y = 2H	5.7	7.0	6.3	7.6	8.3	5.6	6.9	6.2	7.5	8.2
3H	8.4	9.6	9.0	10.2	11.0	8.2	9.4	8.9	10.1	10.9
4H	9.9	11.0	10.6	11.7	12.5	9.7	10.9	10.4	11.5	12.3
6H	11.6	12.6	12.2	13.3	14.2	11.3	12.4	12.0	13.1	13.9
8H	12.5	13.5	13.2	14.2	15.1	12.2	13.3	12.9	14.0	14.8
12H	13.6	14.6	14.3	15.3	16.1	13.3	14.3	14.0	15.0	15.8
4H 2H	6.5	7.6	7.2	8.3	9.1	6.4	7.6	7.1	8.3	9.0
3H	9.4	10.4	10.1	11.1	12.0	9.3	10.3	10.0	11.0	11.8
4H	11.1	12.0	11.8	12.7	13.6	10.9	11.8	11.6	12.6	13.4
6H	12.9	13.7	13.7	14.5	15.4	12.7	13.6	13.5	14.3	15.2
8H	14.0	14.7	14.7	15.5	16.4	13.7	14.5	14.5	15.3	16.2
12H	15.1	15.9	15.9	16.6	17.6	14.9	15.6	15.6	16.4	17.3
8H 4H	11.7	12.4	12.4	13.2	14.1	11.6	12.3	12.3	13.1	14.0
6H	13.8	14.5	14.6	15.3	16.2	13.6	14.3	14.4	15.1	16.0
8H	15.0	15.6	15.8	16.4	17.4	14.8	15.4	15.6	16.2	17.2
12H	16.4	17.0	17.2	17.8	18.8	16.2	16.7	17.0	17.5	18.5
12H 4H	11.8	12.5	12.6	13.3	14.3	11.7	12.4	12.5	13.2	14.1
6H	14.1	14.7	14.9	15.5	16.4	13.9	14.5	14.7	15.3	16.3
8H	15.4	15.9	16.2	16.7	17.7	15.2	15.7	16.0	16.6	17.6
Variations with the observer position at spacings(CIE Pub.117):										
S = 1.0H	+ 0.1 / - 0.1					+ 0.1 / - 0.1				
1.5H	+ 0.2 / - 0.3					+ 0.2 / - 0.3				
2.0H	+ 0.3 / - 0.4					+ 0.3 / - 0.4				

CIE Pub.117, 711.3 lm Total Lamp Luminous Flux Correct (8log(F/F0) = -1.2)
 Area: 1 m2

C Range: 0 - 360DEG
 C Interval: 22.5DEG
 Test Speed: HIGH
 Temperature:25.3°C
 Operators:DAMIN
 Test Date:2023-11-09

γ Range: 0 - 180DEG
 γ Interval: 5.0DEG
 Test System:EVERFINE GO-2000B_V1 SYSTEM V2.00.473
 Humidity:65.0%
 Test Distance:9.401m [K=1.0000]
 Remarks:

UTILIZATION FACTORS TABLE

Test:U:220.33V I:0.0576A P:6.8073W PF:0.5366 Freq:50.00Hz Lamp Flux:711.311x1 lm		
NAME: 球泡	TYPE:	WEIGHT:
SPEC.:	DIM.:	SERIAL No.:
MFR.: EVERFINE	SUR.: 1	Shielding Angle:

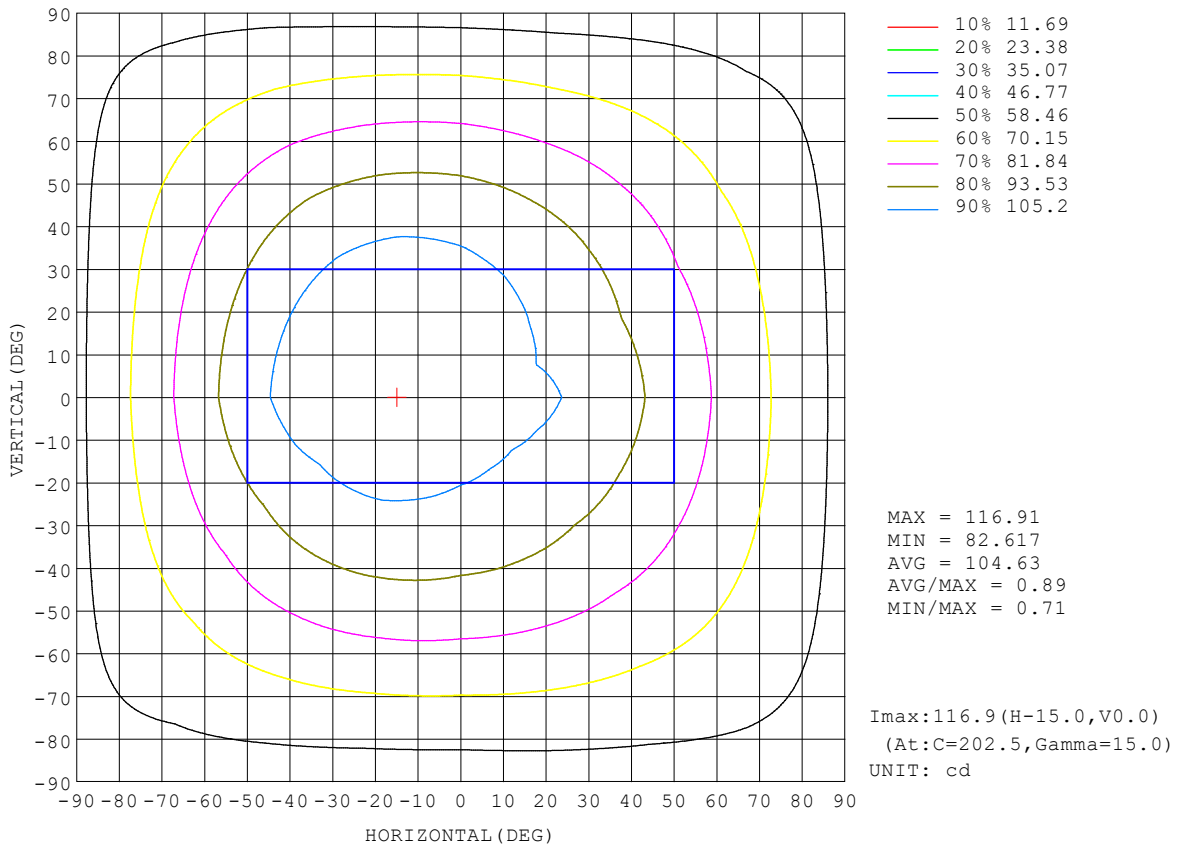
REFLECTANCE										
Ceiling	0.8	0.8	0.8	0.7	0.7	0.7	0.5	0.5	0.5	0
Walls	0.7	0.5	0.3	0.7	0.5	0.3	0.7	0.5	0.3	0
Working plane	0.2	0.2	0.2	0.2	0.2	0.2	0.2	0.2	0.2	0
ROOM INDEX	UTILIZATION FACTORS (PERCENT) $k(RI) \times RCR = 5$									
k = 0.60	44	31	24	42	30	23	40	29	23	16
0.80	52	39	31	51	38	30	47	36	29	21
1.00	60	46	38	58	45	37	53	45	35	26
1.25	67	53	44	64	52	43	59	49	41	30
1.50	72	59	50	69	57	48	63	53	46	34
2.00	80	68	59	76	65	57	69	60	53	40
2.50	84	73	65	80	70	62	73	65	58	43
3.00	88	78	70	84	75	67	76	69	62	47
4.00	93	84	77	88	81	74	80	74	68	51
5.00	96	89	82	91	85	79	83	77	72	54
ROOM INDEX	UF(total)									Direct
According to DIN EN 13032-2 2004			Suspended				SHRNOM = 1.25			

C Range: 0 - 360DEG
 C Interval: 22.5DEG
 Test Speed: HIGH
 Temperature:25.3°C
 Operators:DAMIN
 Test Date:2023-11-09

γ Range: 0 - 180DEG
 γ Interval: 5.0DEG
 Test System:EVERFINE GO-2000B_V1 SYSTEM V2.00.473
 Humidity:65.0%
 Test Distance:9.401m [K=1.0000]
 Remarks:

ISOCANDELA DIAGRAM

Test:U:220.33V I:0.0576A P:6.8073W PF:0.5366 Freq:50.00Hz Lamp Flux:711.311x1 lm		
NAME: 球泡	TYPE:	WEIGHT:
SPEC.:	DIM.:	SERIAL No.:
MFR.: EVERFINE	SUR.: 1	Shielding Angle:

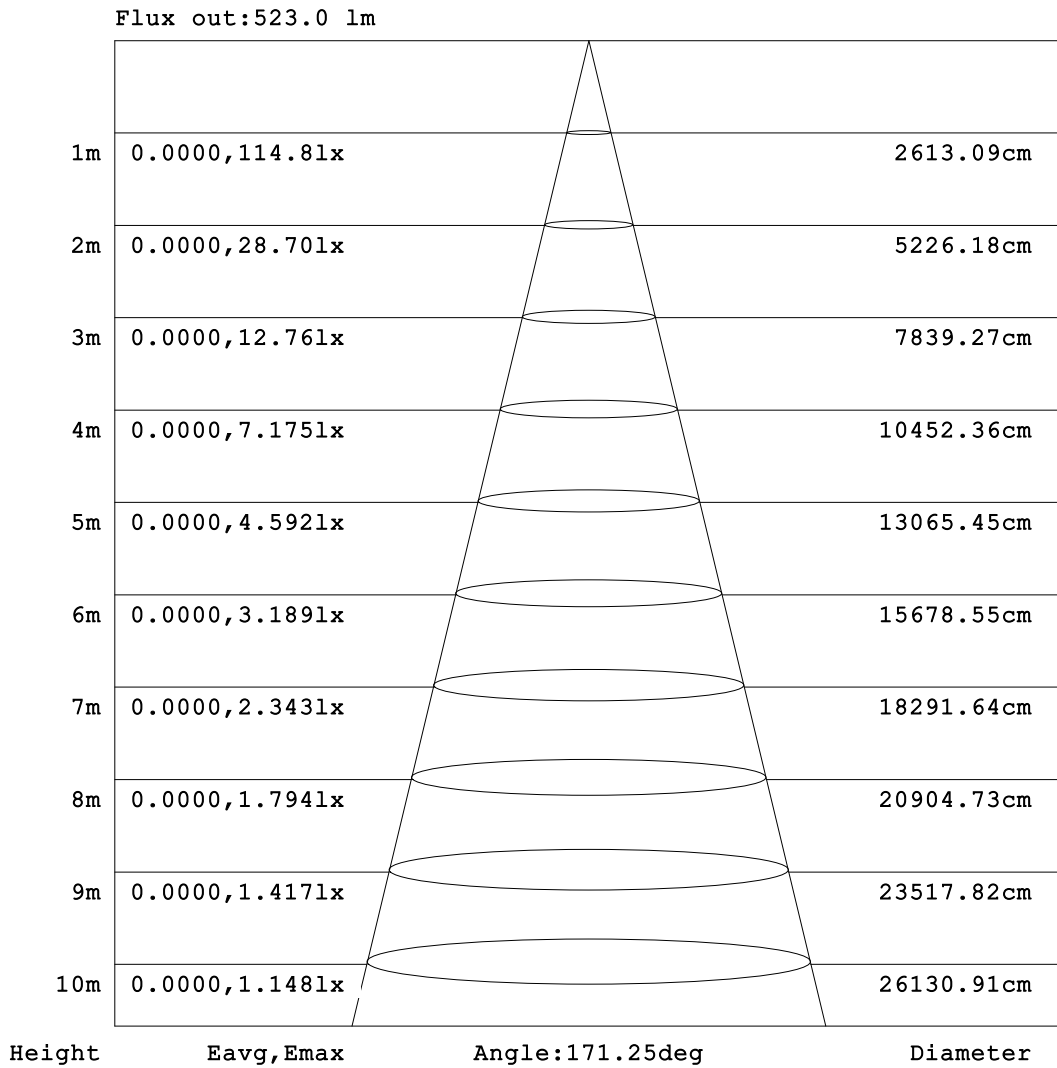


C Range: 0 - 360DEG
 C Interval: 22.5DEG
 Test Speed: HIGH
 Temperature:25.3°C
 Operators:DAMIN
 Test Date:2023-11-09

γ Range: 0 - 180DEG
 γ Interval: 5.0DEG
 Test System:EVERFINE GO-2000B_V1 SYSTEM V2.00.473
 Humidity:65.0%
 Test Distance:9.401m [K=1.0000]
 Remarks:

AAI Figure

Test:U:220.33V I:0.0576A P:6.8073W PF:0.5366 Freq:50.00Hz Lamp Flux:711.311x1 lm		
NAME: 球泡	TYPE:	WEIGHT:
SPEC.:	DIM.:	SERIAL No.:
MFR.: EVERFINE	SUR.: 1	Shielding Angle:



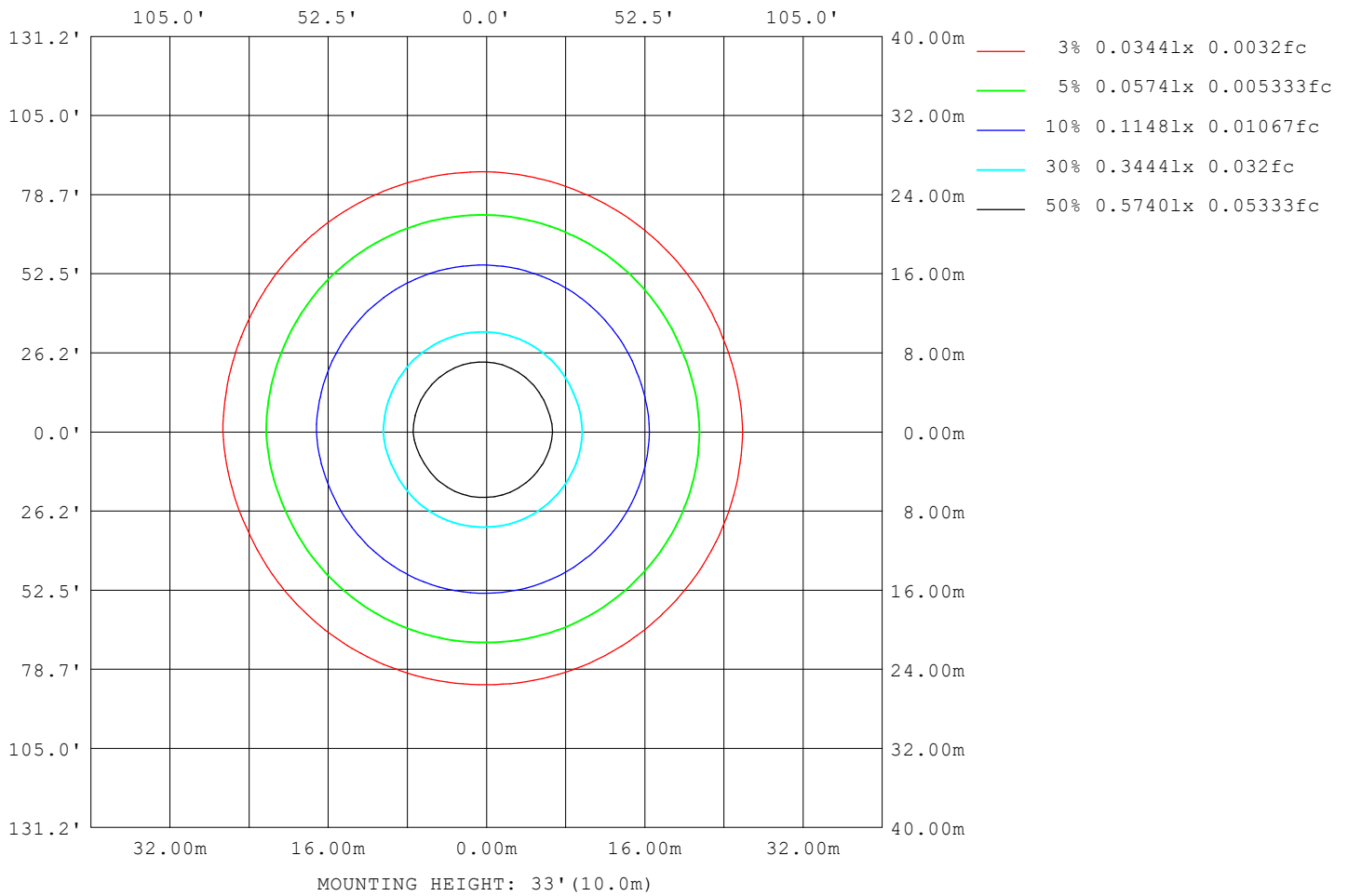
Note:The Curves indicate the illuminated area and the average illumination when the luminaire is at different distance.

C Range: 0 - 360DEG
C Interval: 22.5DEG
Test Speed: HIGH
Temperature:25.3°C
Operators:DAMIN
Test Date:2023-11-09

γ Range: 0 - 180DEG
γ Interval: 5.0DEG
Test System:EVERFINE GO-2000B_V1 SYSTEM V2.00.473
Humidity:65.0%
Test Distance:9.401m [K=1.0000]
Remarks:

ISOLUX DIAGRAM

Test:U:220.33V I:0.0576A P:6.8073W PF:0.5366 Freq:50.00Hz Lamp Flux:711.311x1 lm		
NAME: 球泡	TYPE:	WEIGHT:
SPEC.:	DIM.:	SERIAL No.:
MFR.: EVERFINE	SUR.: 1	Shielding Angle:



C Range: 0 - 360DEG
 C Interval: 22.5DEG
 Test Speed: HIGH
 Temperature:25.3°C
 Operators:DAMIN
 Test Date:2023-11-09

γ Range: 0 - 180DEG
 γ Interval: 5.0DEG
 Test System:EVERFINE GO-2000B_V1 SYSTEM V2.00.473
 Humidity:65.0%
 Test Distance:9.401m [K=1.0000]
 Remarks:

LED Avg.L Report

Test:U:220.33V I:0.0576A P:6.8073W PF:0.5366 Freq:50.00Hz Lamp Flux:711.311x1 lm		
NAME: 球泡	TYPE:	WEIGHT:
SPEC.:	DIM.:	SERIAL No.:
MFR.: EVERFINE	SUR.: 1	Shielding Angle:

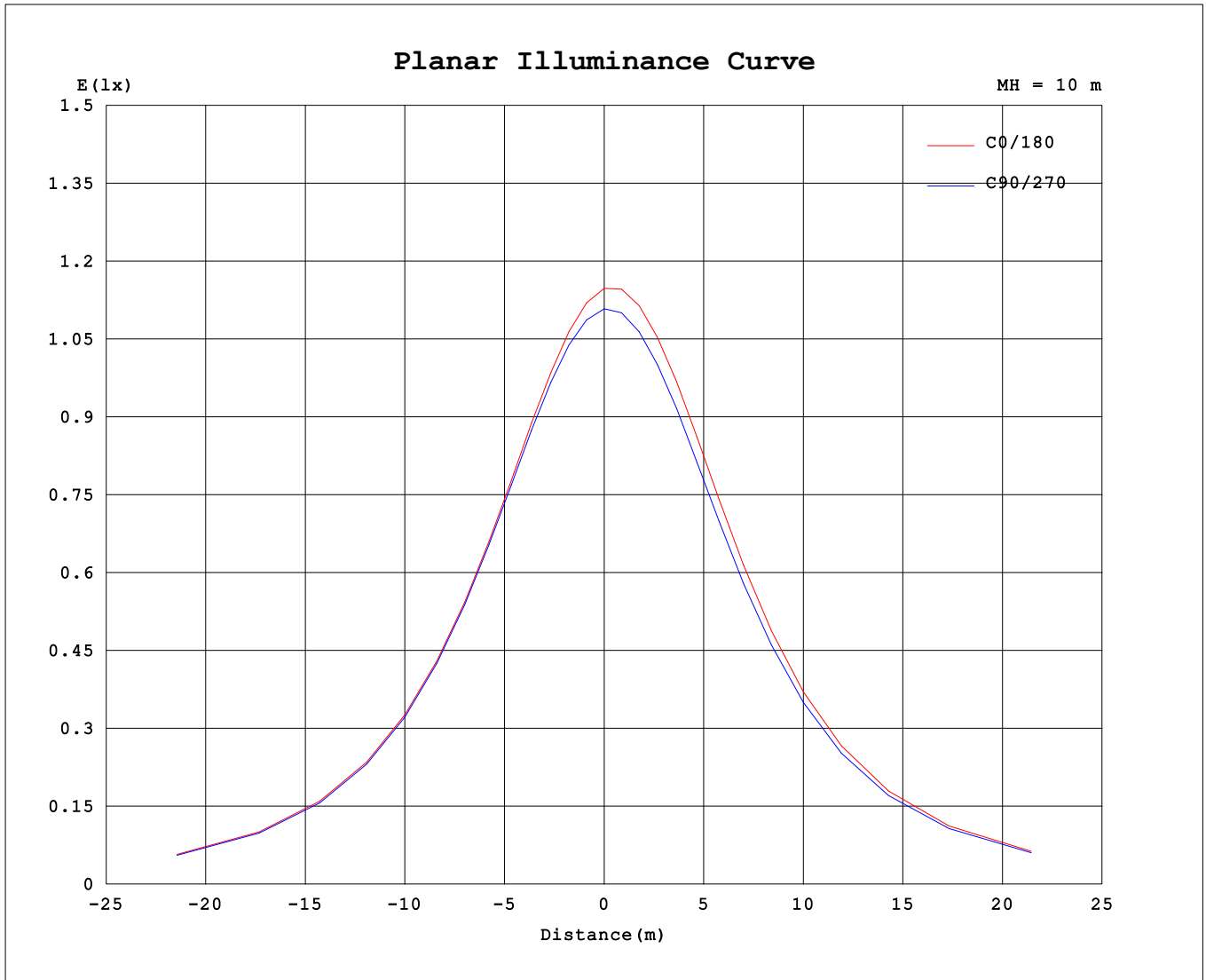
AvgL	cd/m2
L_0~180 (65) av	186
L_0~180 (75) av	265
L_0~180 (85) av	675
L_90~270 (65) av	185
L_90~270 (75) av	265
L_90~270 (85) av	672
L_45 (65) av	186
L_45 (75) av	265
L_45 (85) av	675

Standard: GB/T 29293-2012

C Range: 0 - 360DEG
 C Interval: 22.5DEG
 Test Speed: HIGH
 Temperature:25.3℃
 Operators:DAMIN
 Test Date:2023-11-09

γ Range: 0 - 180DEG
 γ Interval: 5.0DEG
 Test System:EVERFINE GO-2000B_V1 SYSTEM V2.00.473
 Humidity:65.0%
 Test Distance:9.401m [K=1.0000]
 Remarks:

Planar Illuminance Curve



C Range: 0 - 360DEG
 C Interval: 22.5DEG
 Test Speed: HIGH
 Temperature: 25.3°C
 Operators: DAMIN
 Test Date: 2023-11-09

γ Range: 0 - 180DEG
 γ Interval: 5.0DEG
 Test System: EVERFINE GO-2000B_V1 SYSTEM V2.00.473
 Humidity: 65.0%
 Test Distance: 9.401m [K=1.0000]
 Remarks:

LUMINOUS DISTRIBUTION INTENSITY DATA

Test:U:220.33V I:0.0576A P:6.8073W PF:0.5366 Freq:50.00Hz Lamp Flux:711.311x1 lm		
NAME: 球泡	TYPE:	WEIGHT:
SPEC.:	DIM.:	SERIAL No.:
MFR.: EVERFINE	SUR.: 1	Shielding Angle:

Table--1

UNIT: cd

C (DEG) \ γ (DEG)	0	22.5	45	67.5	90	112.5	135	157.5	180	202.5	225	247.5	270	292.5	315	337.5			
0	112	112	112	112	112	112	112	112	112	112	112	112	112	112	112	112			
5	110	110	110	110	111	111	112	112	113	113	113	113	112	112	111	111			
10	109	108	108	109	110	110	112	113	114	114	114	113	112	111	110	109			
15	106	106	106	107	108	110	111	113	114	114	114	113	112	110	109	108			
20	104	104	104	105	106	108	110	112	114	114	114	113	111	109	107	106			
25	102	102	102	103	104	106	109	111	113	113	113	112	110	108	105	103			
30	99.2	98.9	99.1	100	102	104	107	109	111	112	112	111	109	106	103	101			
35	96.3	96.1	96.2	97.4	98.8	101	104	107	109	110	110	109	106	103	100	98.0			
40	93.2	93.1	93.2	94.2	95.6	97.9	101	104	106	107	107	106	104	100	97.3	95.1			
45	89.9	89.8	89.8	90.8	91.9	94.2	96.9	99.7	102	103	104	102	100	96.9	93.9	91.6			
50	86.3	86.3	86.3	87.1	88.1	90.1	92.6	95.3	97.8	98.8	99.4	98.1	96.0	92.9	90.1	87.9			
55	82.6	82.6	82.5	83.2	83.9	85.6	87.9	90.4	92.9	93.9	94.7	93.4	91.5	88.6	86.1	84.1			
60	78.7	78.8	78.6	79.1	79.5	81.0	83.0	85.3	87.7	88.7	89.5	88.4	86.7	84.0	81.7	80.1			
65	74.7	74.9	74.6	74.9	75.0	76.2	78.0	80.0	82.2	83.2	84.0	83.1	81.7	79.2	77.3	76.0			
70	70.6	70.8	70.4	70.5	70.5	71.4	72.8	74.7	76.6	77.5	78.4	77.6	76.4	74.3	72.9	71.6			
75	66.4	66.6	66.1	66.2	65.9	66.5	67.6	69.3	70.9	71.8	72.7	72.0	71.1	69.4	68.4	67.3			
80	62.1	62.3	61.8	61.7	61.3	61.6	62.6	63.9	65.3	66.1	67.0	66.4	65.8	64.5	63.7	63.0			
85	57.8	58.0	57.4	57.2	56.7	56.8	57.5	58.6	59.8	60.4	61.3	60.9	60.5	59.6	59.1	58.5			
90	53.5	53.7	53.1	52.8	52.1	52.2	52.6	53.5	54.5	55.0	55.9	55.6	55.4	54.7	54.5	54.2			
95	49.3	49.5	48.9	48.5	47.8	47.6	47.9	48.6	49.5	49.9	50.7	50.6	50.6	50.1	50.1	49.8			
100	45.2	45.4	44.8	44.4	43.6	43.4	43.5	44.0	44.7	45.1	45.9	45.8	45.9	45.7	45.8	45.6			
105	41.3	41.5	40.8	40.4	39.6	39.3	39.3	39.7	40.3	40.6	41.4	41.4	41.6	41.5	41.7	41.7			
110	37.5	37.7	37.1	36.6	35.8	35.5	35.4	35.7	36.2	36.4	37.1	37.2	37.5	37.5	37.8	37.8			
115	33.9	34.1	33.5	33.0	32.3	31.9	31.7	31.9	32.4	32.6	33.2	33.3	33.7	33.7	34.1	34.2			
120	30.6	30.7	30.1	29.7	29.0	28.5	28.4	28.5	28.9	29.0	29.6	29.8	30.1	30.3	30.7	30.8			
125	27.4	27.4	26.9	26.5	25.9	25.5	25.2	25.3	25.6	25.8	26.3	26.5	26.8	27.0	27.4	27.6			
130	24.4	24.5	23.9	23.6	23.0	22.6	22.4	22.4	22.7	22.8	23.3	23.5	23.8	24.0	24.4	24.6			
135	21.6	21.7	21.2	20.8	20.3	20.0	19.7	19.7	20.0	20.1	20.5	20.7	21.1	21.3	21.6	21.8			
140	19.0	19.1	18.6	18.3	17.8	17.5	17.3	17.3	17.5	17.6	18.0	18.2	18.5	18.8	19.0	19.2			
145	16.7	16.7	16.3	16.0	15.6	15.3	15.1	15.1	15.3	15.4	15.7	15.9	16.2	16.5	16.7	16.8			
150	14.5	14.5	14.1	13.8	13.5	13.3	13.1	13.1	13.3	13.4	13.7	13.9	14.1	14.4	14.6	14.7			
155	12.5	12.4	12.1	11.8	11.6	11.4	11.3	11.3	11.4	11.5	11.8	11.9	12.2	12.4	12.6	12.6			
160	10.4	10.4	10.1	9.75	9.65	9.47	9.40	9.41	9.55	9.67	9.93	10.1	10.3	10.5	10.6	10.7			
165	8.19	8.31	8.14	7.38	7.63	7.48	7.39	7.56	7.74	7.87	8.09	8.30	8.49	8.64	8.72	8.72			
170	5.49	5.30	4.50	4.61	4.54	4.79	4.80	5.24	5.51	5.73	5.98	6.18	6.34	6.44	6.41	6.30			
175	1.29	1.27	1.25	1.25	1.24	1.24	1.24	1.24	1.28	1.66	2.18	2.44	2.58	2.20	1.88	1.54			
180	1.25	1.28	1.25	1.25	1.24	1.24	1.24	1.24	1.27	1.25	1.26	1.25	1.26	1.26	1.26	1.26			

C Range: 0 - 360DEG
 C Interval: 22.5DEG
 Test Speed: HIGH
 Temperature:25.3℃
 Operators:DAMIN
 Test Date:2023-11-09

γ Range: 0 - 180DEG
 γ Interval: 5.0DEG
 Test System:EVERFINE GO-2000B_V1 SYSTEM V2.00.473
 Humidity:65.0%
 Test Distance:9.401m [K=1.0000]
 Remarks: