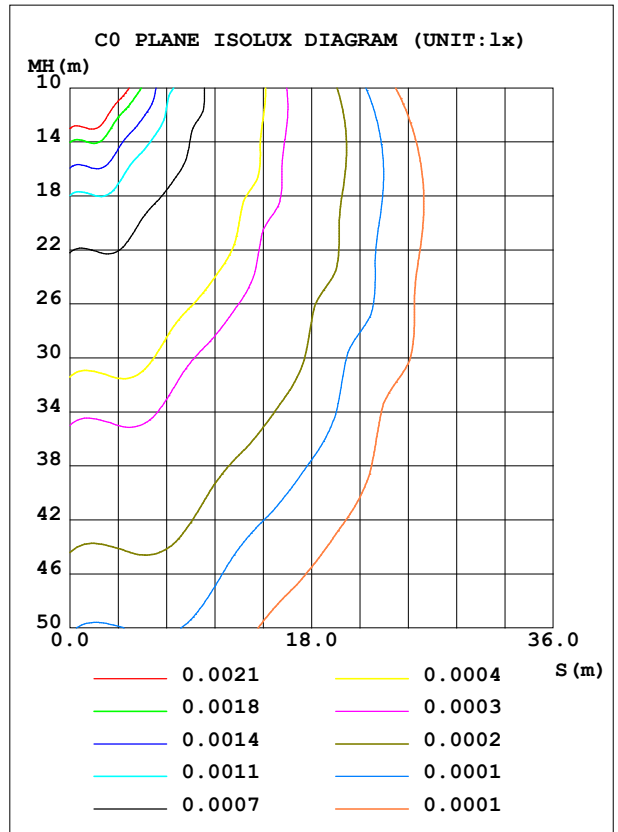
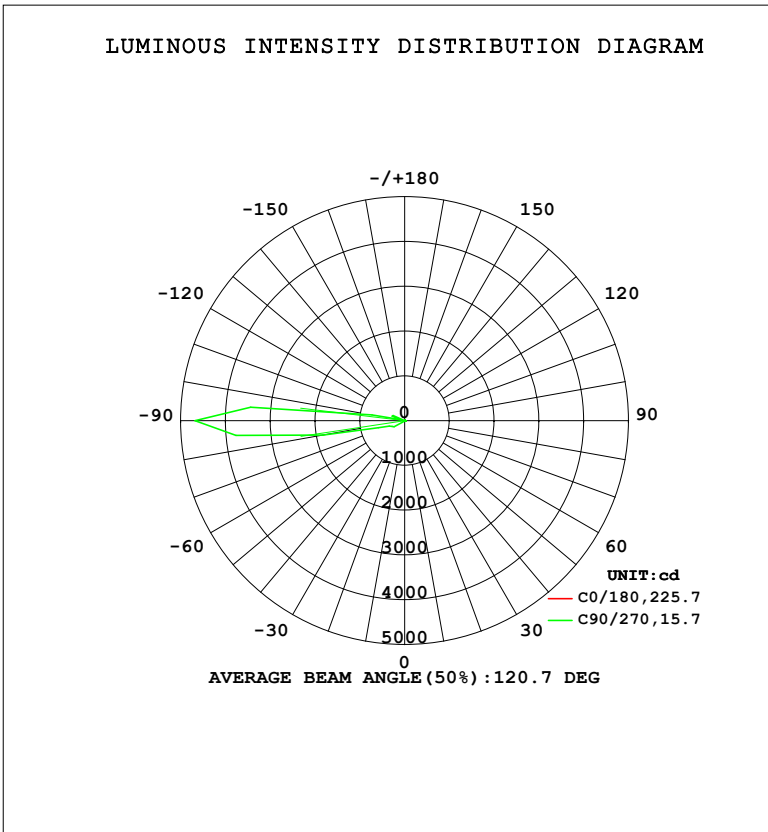


LUMINAIRE PHOTOMETRIC TEST REPORT

Test:U:220.34V I:0.0473A P:5.1955W PF:0.4982 Freq:50.00Hz Lamp Flux:486.472x1 lm		
NAME: 壁灯	TYPE: W系列	WEIGHT:
SPEC.:	DIM.:	SERIAL No.:
MFR.: EVERFINE	SUR.: 156.5mm	Shielding Angle:

DATA OF LAMP		PHOTOMETRIC DATA				Eff: 93.63 lm/W
MODEL	W07B	I _{max} (cd)	4683	S/MH (C0/180)	0.77	
NOMINAL POWER (W)	5	LOR (%)	100.0	S/MH (C90/270)	80.96	
RATED VOLTAGE (V)	220	TOTAL FLUX (lm)	486.47	η UP, DN (C0-180)	0.5, 0.5	
NOMINAL FLUX (lm)	486.472	CIE CLASS	DIFFUSE	η UP, DN (C180-360)	41.0, 58.0	
LAMPS INSIDE	1	η up (%)	41.5	CIBSE SHR NOM	0.00	
TEST VOLTAGE (V)	219.5	η down (%)	58.5	CIBSE SHR MAX	0.05	



C Range: 0 - 360DEG
 C Interval: 22.5DEG
 Test Speed: HIGH
 Temperature: 25.3°C
 Operators: DAMIN
 Test Date: 2023-11-17

γ Range: 0 - 180DEG
 γ Interval: 5.0DEG
 Test System: EVERFINE GO-2000B_V1 SYSTEM V2.00.473
 Humidity: 65.0%
 Test Distance: 9.401m [K=1.0000]
 Remarks:

ZONAL FLUX DIAGRAM

ZONAL FLUX DIAGRAM:

γ	C0	C45	C90	C135	C180	C225	C270	C315	γ	Φ zone	Φ total	%lum,lamp
10	0.1210	0.0991	0.1096	0.1019	0.1008	0.2380	0.4113	0.2803	0- 10	0.0137	0.0137	0.00,0.00
20	0.0968	0.0661	0.0731	0.0764	0.0746	0.3965	0.8592	0.4840	10- 20	0.0523	0.0660	0.01,0.01
30	0.0847	0.0462	0.1458	0.0594	0.0686	0.6344	2.367	0.7981	20- 30	0.1365	0.2025	0.04,0.04
40	0.0746	0.0462	0.3921	0.0594	0.0686	1.223	3.985	1.461	30- 40	0.3463	0.5488	0.11,0.11
50	0.0665	0.1254	1.924	0.0933	0.0686	1.949	11.23	2.428	40- 50	0.7625	1.311	0.27,0.27
60	0.0665	0.2839	3.761	0.2205	0.0686	2.385	275.5	3.123	50- 60	5.350	6.661	1.37,1.37
70	0.0665	0.4688	4.300	0.4155	0.0686	2.649	367.1	3.590	60- 70	25.22	31.88	6.55,6.55
80	0.0665	0.6142	4.803	0.6447	0.0686	3.052	1857	4.124	70- 80	64.13	96.01	19.7,19.7
90	0.0665	0.6144	4.402	0.7130	0.0685	3.513	4683	3.980	80- 90	188.6	284.6	58.5,58.5
100	0.0665	0.6142	4.064	0.8987	0.0585	0.6529	745.0	0.9586	90-100	161.9	446.5	91.8,91.8
110	0.0665	0.5686	4.230	0.9080	0.0544	2.153	300.2	1.833	100-110	20.78	467.3	96.1,96.1
120	0.0645	0.4560	2.697	0.6877	0.0464	1.578	23.47	1.205	110-120	17.74	485.0	99.7,99.7
130	0.0585	0.2182	1.994	0.3568	0.0403	0.6312	2.335	0.4140	120-130	1.044	486.1	99.9,99.9
140	0.0565	0.1058	0.7788	0.1869	0.0363	0.2178	1.004	0.1527	130-140	0.2903	486.4	100,100
150	0.0565	0.0397	0.3199	0.0510	0.0302	0.0132	0.3738	0	140-150	0.0840	486.4	100,100
160	0.0565	0	0.0277	0.0254	0.0302	0	0.0091	0	150-160	0.0257	486.5	100,100
170	0.0565	0	0	0	0.0302	0	0	0	160-170	0.0090	486.5	100,100
180	0.0403	0	0	0	0.0302	0	0	0	170-180	0.0031	486.5	100,100
DEG	LUMINOUS INTENSITY:cd									UNIT:lm		

Conical surface Flux(90deg): 0.84391 lm

%lum = 0.2%

%lamp = 0.2%

Conical surface Flux(130deg): 16.043 lm

%lum = 3.3%

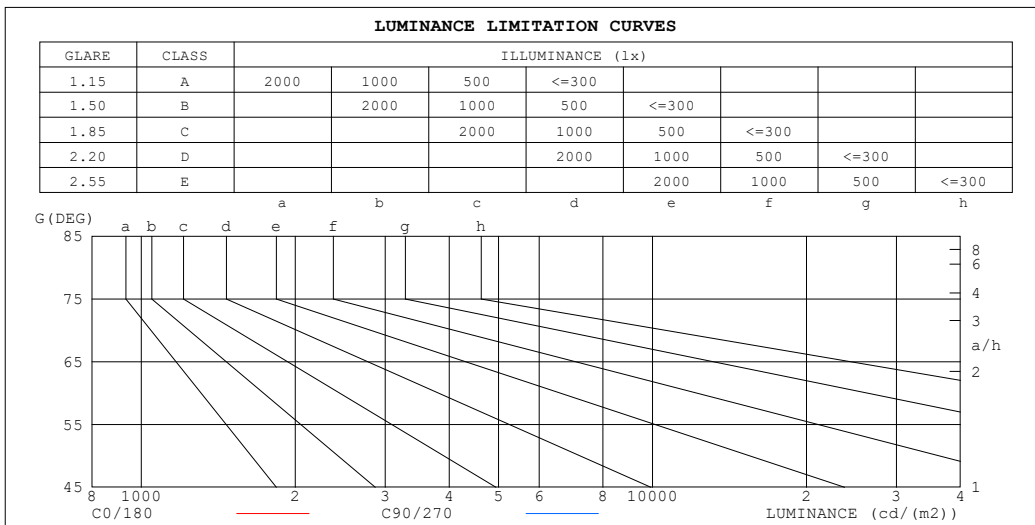
%lamp = 3.3%

C Range: 0 - 360DEG
 C Interval: 22.5DEG
 Test Speed: HIGH
 Temperature:25.3°C
 Operators:DAMIN
 Test Date:2023-11-17

γ Range: 0 - 180DEG
 γ Interval: 5.0DEG
 Test System:EVERFINE GO-2000B_V1 SYSTEM V2.00.473
 Humidity:65.0%
 Test Distance:9.401m [K=1.0000]
 Remarks:

LUMINANCE LIMITATION CURVES

Test:U:220.34V I:0.0473A P:5.1955W PF:0.4982 Freq:50.00Hz Lamp Flux:486.472x1 lm		
NAME: 壁灯	TYPE: W系列	WEIGHT:
SPEC.:	DIM.:	SERIAL No.:
MFR.: EVERFINE	SUR.: 156.5mm	Shielding Angle:



LUMINANCE cd/(m2)		
G (DEG)	C0/180	C90/270
85	23	364
80	11	182
75	8	119
70	6	83
65	5	63
60	4	50
55	3	35
50	3	20
45	3	8

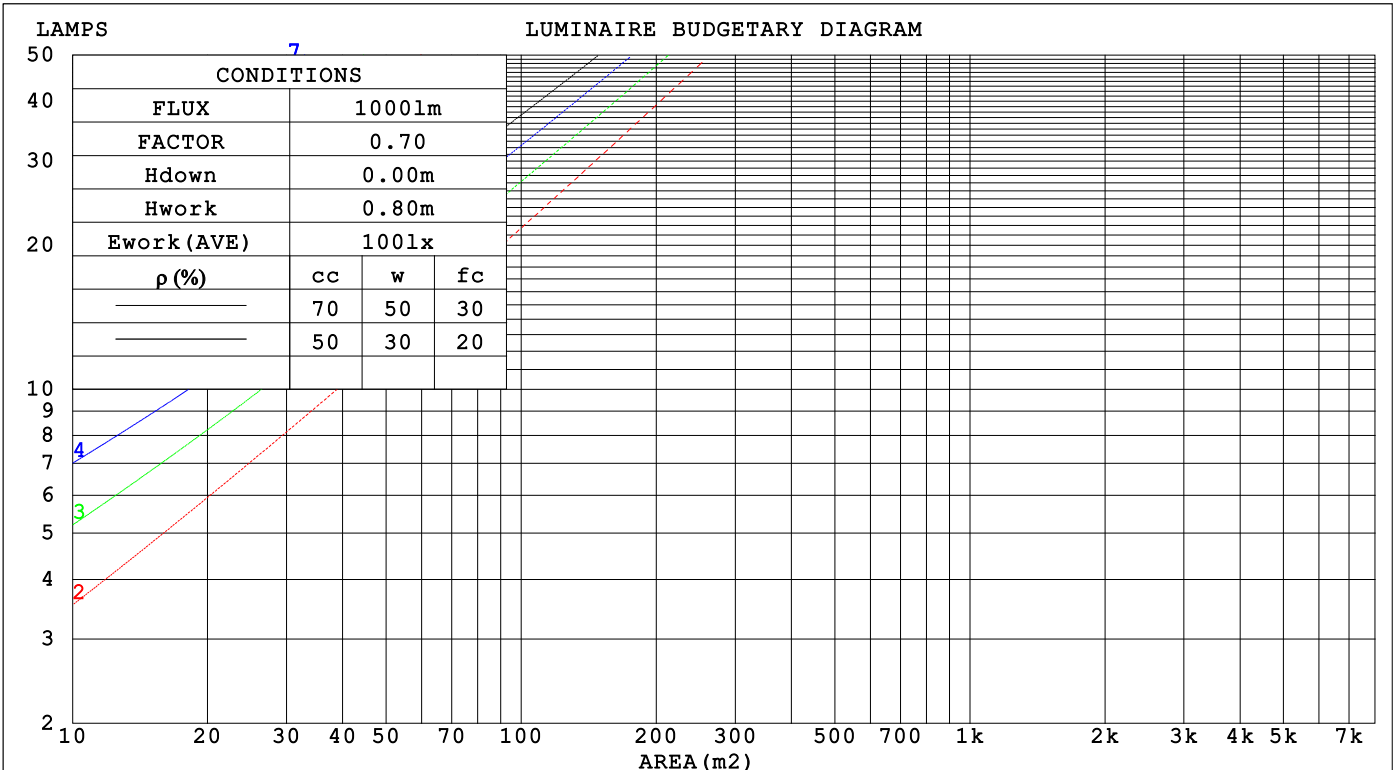
C Range: 0 - 360DEG
 C Interval: 22.5DEG
 Test Speed: HIGH
 Temperature:25.3°C
 Operators:DAMIN
 Test Date:2023-11-17

γ Range: 0 - 180DEG
 γ Interval: 5.0DEG
 Test System:EVERFINE GO-2000B_V1 SYSTEM V2.00.473
 Humidity:65.0%
 Test Distance:9.401m [K=1.0000]
 Remarks:

CU AND LUMINAIRE BUDGETARY ESTIMATE DIAGRAM

Test:U:220.34V I:0.0473A P:5.1955W PF:0.4982 Freq:50.00Hz Lamp Flux:486.472x1 lm		
NAME: 壁灯	TYPE: W系列	WEIGHT:
SPEC.:	DIM.:	SERIAL No.:
MFR.: EVERFINE	SUR.: 156.5mm	Shielding Angle:

pcc	80%			70%			50%			30%			10%			0
pw	50%	30%	10%	50%	30%	10%	50%	30%	10%	50%	30%	10%	50%	30%	10%	0
pfc	20%			20%			20%			20%			20%			0
RCR	RCR:Room Cavity Ratio						Coefficients of Utilization(CU)									
0.0	1.09	1.09	1.09	1.02	1.02	1.02	.88	.88	.88	.75	.75	.75	.64	.64	.64	.59
1.0	.73	.63	.54	.66	.57	.49	.54	.46	.39	.42	.36	.31	.32	.27	.22	.17
2.0	.59	.47	.37	.53	.42	.33	.42	.33	.26	.32	.25	.19	.23	.17	.12	.07
3.0	.50	.38	.28	.45	.34	.25	.35	.27	.19	.27	.20	.14	.19	.13	.08	.03
4.0	.43	.31	.23	.39	.28	.20	.31	.22	.15	.23	.16	.11	.16	.11	.06	.02
5.0	.38	.27	.19	.34	.24	.17	.27	.19	.13	.21	.14	.09	.15	.09	.05	.01
6.0	.34	.23	.16	.31	.21	.14	.25	.17	.11	.19	.12	.07	.14	.08	.04	.01
7.0	.31	.21	.14	.28	.19	.12	.22	.15	.09	.17	.11	.06	.13	.07	.03	.00
8.0	.28	.18	.12	.25	.17	.10	.20	.13	.08	.16	.10	.05	.12	.07	.03	.00
9.0	.25	.16	.10	.23	.15	.09	.19	.12	.07	.15	.09	.05	.11	.06	.03	.00
10.0	.23	.15	.09	.21	.13	.08	.17	.11	.06	.14	.08	.04	.10	.06	.02	.00



C Range: 0 - 360DEG
 C Interval: 22.5DEG
 Test Speed: HIGH
 Temperature:25.3°C
 Operators:DAMIN
 Test Date:2023-11-17

γ Range: 0 - 180DEG
 γ Interval: 5.0DEG
 Test System:EVERFINE GO-2000B_V1 SYSTEM V2.00.473
 Humidity:65.0%
 Test Distance:9.401m [K=1.0000]
 Remarks:

WEC AND CCEC

Test:U:220.34V I:0.0473A P:5.1955W PF:0.4982 Freq:50.00Hz																	
Lamp Flux:486.472x1 lm																	
NAME: 壁灯						TYPE: W系列						WEIGHT:					
SPEC.:						DIM.:						SERIAL No.:					
MFR.: EVERFINE						SUR.: 156.5mm						Shielding Angle:					

ρ _{CC}	80%			70%			50%			30%			10%			0		
ρ _w	50%	30%	10%	50%	30%	10%	50%	30%	10%	50%	30%	10%	50%	30%	10%	0		
ρ _{fc}	20%			20%			20%			20%			20%			0		
RCR	RCR:Room Cavity Ratio									Wall Exitance Coefficients (WEC)								
0.0																		
1.0	.718	.408	.129	.697	.398	.126	.658	.378	.121	.622	.359	.115	.590	.342	.110			
2.0	.500	.274	.084	.481	.265	.082	.446	.248	.077	.413	.232	.073	.383	.217	.068			
3.0	.395	.210	.063	.378	.203	.061	.346	.188	.057	.316	.173	.053	.289	.160	.049			
4.0	.331	.172	.051	.315	.165	.049	.286	.152	.045	.259	.139	.042	.233	.127	.039			
5.0	.286	.146	.042	.272	.140	.041	.245	.128	.038	.220	.116	.035	.197	.105	.032			
6.0	.253	.127	.036	.240	.121	.035	.215	.110	.032	.193	.100	.029	.171	.090	.027			
7.0	.227	.112	.032	.215	.107	.031	.193	.097	.028	.172	.088	.026	.152	.079	.023			
8.0	.207	.101	.028	.196	.096	.027	.175	.087	.025	.155	.079	.023	.137	.070	.020			
9.0	.190	.092	.026	.179	.087	.025	.160	.079	.022	.142	.071	.020	.125	.063	.018			
10.0	.175	.084	.023	.166	.080	.022	.148	.072	.020	.131	.065	.018	.115	.058	.017			

ρ _{CC}	80%			70%			50%			30%			10%			0		
ρ _w	50%	30%	10%	50%	30%	10%	50%	30%	10%	50%	30%	10%	50%	30%	10%	0		
ρ _{fc}	20%			20%			20%			20%			20%			0		
RCR	RCR:Room Cavity Ratio									Ceiling Cavity Exitance Coefficients (CCEC)								
0.0	.507	.507	.507	.433	.433	.433	.296	.296	.296	.170	.170	.170	.054	.054	.054			
1.0	.527	.471	.421	.451	.404	.362	.309	.278	.250	.178	.161	.146	.057	.052	.047			
2.0	.521	.452	.394	.446	.389	.340	.306	.269	.237	.176	.157	.139	.057	.051	.045			
3.0	.511	.438	.379	.438	.378	.329	.301	.262	.231	.174	.153	.136	.056	.050	.045			
4.0	.501	.427	.370	.430	.369	.322	.296	.257	.226	.171	.151	.134	.055	.049	.044			
5.0	.491	.418	.364	.422	.362	.317	.290	.253	.224	.168	.148	.133	.054	.048	.044			
6.0	.482	.411	.360	.414	.356	.313	.286	.249	.222	.166	.146	.132	.053	.048	.043			
7.0	.473	.404	.356	.407	.350	.310	.281	.246	.220	.163	.145	.131	.053	.047	.043			
8.0	.465	.399	.354	.400	.346	.308	.277	.243	.219	.161	.143	.130	.052	.047	.043			
9.0	.458	.394	.351	.394	.342	.307	.273	.241	.218	.159	.142	.130	.052	.047	.043			
10.0	.451	.390	.350	.389	.339	.305	.270	.238	.217	.157	.141	.129	.051	.046	.043			

C Range: 0 - 360DEG
 C Interval: 22.5DEG
 Test Speed: HIGH
 Temperature:25.3°C
 Operators:DAMIN
 Test Date:2023-11-17

γ Range: 0 - 180DEG
 γ Interval: 5.0DEG
 Test System:EVERFINE GO-2000B_V1 SYSTEM V2.00.473
 Humidity:65.0%
 Test Distance:9.401m [K=1.0000]
 Remarks:

UGR(Unified Glare Rating) Table

Test:U:220.34V I:0.0473A P:5.1955W PF:0.4982 Freq:50.00Hz										
Lamp Flux:486.472x1 lm										
NAME: 壁灯				TYPE: W系列				WEIGHT:		
SPEC.:				DIM.:				SERIAL No.:		
MFR.: EVERFINE				SUR.: 156.5mm				Shielding Angle:		
ceiling/cavity	0.7	0.7	0.5	0.5	0.3	0.7	0.7	0.5	0.5	0.3
walls	0.5	0.3	0.5	0.3	0.3	0.5	0.3	0.5	0.3	0.3
working plane	0.2	0.2	0.2	0.2	0.2	0.2	0.2	0.2	0.2	0.2
Room dimensions	Viewed crosswise					Viewed endwise				
x = 2H y = 2H	-29.9	-28.5	-29.1	-27.6	-26.6	-10.0	-8.7	-9.2	-7.8	-6.7
3H	-26.2	-24.9	-25.4	-24.0	-22.9	-5.1	-3.8	-4.3	-3.0	-1.8
4H	-23.8	-22.6	-23.0	-21.7	-20.6	-2.7	-1.4	-1.8	-0.6	0.6
6H	-21.1	-20.0	-20.3	-19.1	-17.9	-0.1	1.0	0.7	1.9	3.1
8H	-19.6	-18.5	-18.8	-17.6	-16.4	1.3	2.4	2.1	3.3	4.5
12H	-18.0	-16.8	-17.1	-15.9	-14.7	2.6	3.8	3.5	4.7	5.9
4H 2H	-19.4	-18.2	-18.6	-17.3	-16.1	-10.2	-9.0	-9.4	-8.1	-6.9
3H	-19.1	-17.9	-18.2	-17.0	-15.9	-4.7	-3.6	-3.9	-2.7	-1.5
4H	-18.8	-17.7	-17.9	-16.8	-15.6	-1.9	-0.8	-1.0	0.1	1.3
6H	-18.0	-17.0	-17.1	-16.1	-14.9	1.1	2.0	1.9	3.0	4.2
8H	-17.3	-16.3	-16.4	-15.4	-14.1	2.6	3.6	3.5	4.5	5.7
12H	-16.1	-15.2	-15.2	-14.2	-13.0	4.1	5.0	5.0	6.0	7.2
8H 4H	-11.9	-11.0	-11.0	-10.0	-8.8	-1.9	-1.0	-1.0	-0.0	1.2
6H	-11.7	-10.9	-10.8	-9.9	-8.6	1.5	2.3	2.4	3.3	4.5
8H	-11.6	-10.8	-10.7	-9.8	-8.6	3.4	4.2	4.3	5.1	6.4
12H	-11.4	-10.7	-10.5	-9.7	-8.4	5.2	5.9	6.1	6.9	8.2
12H 4H	-9.0	-8.1	-8.1	-7.1	-5.9	-2.0	-1.1	-1.1	-0.2	1.1
6H	-8.6	-7.8	-7.7	-6.8	-5.6	1.4	2.2	2.3	3.2	4.4
8H	-8.5	-7.8	-7.6	-6.8	-5.5	3.4	4.1	4.3	5.1	6.4
Variations with the observer position at spacings(CIE Pub.117):										
S = 1.0H	+ 0.1 / - 0.1					+ 0.1 / - 0.2				
1.5H	+ 0.3 / - 0.2					+ 0.3 / - 0.4				
2.0H	+ 0.6 / - 0.6					+ 0.4 / - 0.5				

CIE Pub.117, 486.5 lm Total Lamp Luminous Flux Correct (8log(F/F0) = -2.5)
 Area: 0.1 m2

C Range: 0 - 360DEG
 C Interval: 22.5DEG
 Test Speed: HIGH
 Temperature:25.3°C
 Operators:DAMIN
 Test Date:2023-11-17

γ Range: 0 - 180DEG
 γ Interval: 5.0DEG
 Test System:EVERFINE GO-2000B_V1 SYSTEM V2.00.473
 Humidity:65.0%
 Test Distance:9.401m [K=1.0000]
 Remarks:

UTILIZATION FACTORS TABLE

Test:U:220.34V I:0.0473A P:5.1955W PF:0.4982 Freq:50.00Hz Lamp Flux:486.472x1 lm		
NAME: 壁灯	TYPE: W系列	WEIGHT:
SPEC.:	DIM.:	SERIAL No.:
MFR.: EVERFINE	SUR.: 156.5mm	Shielding Angle:

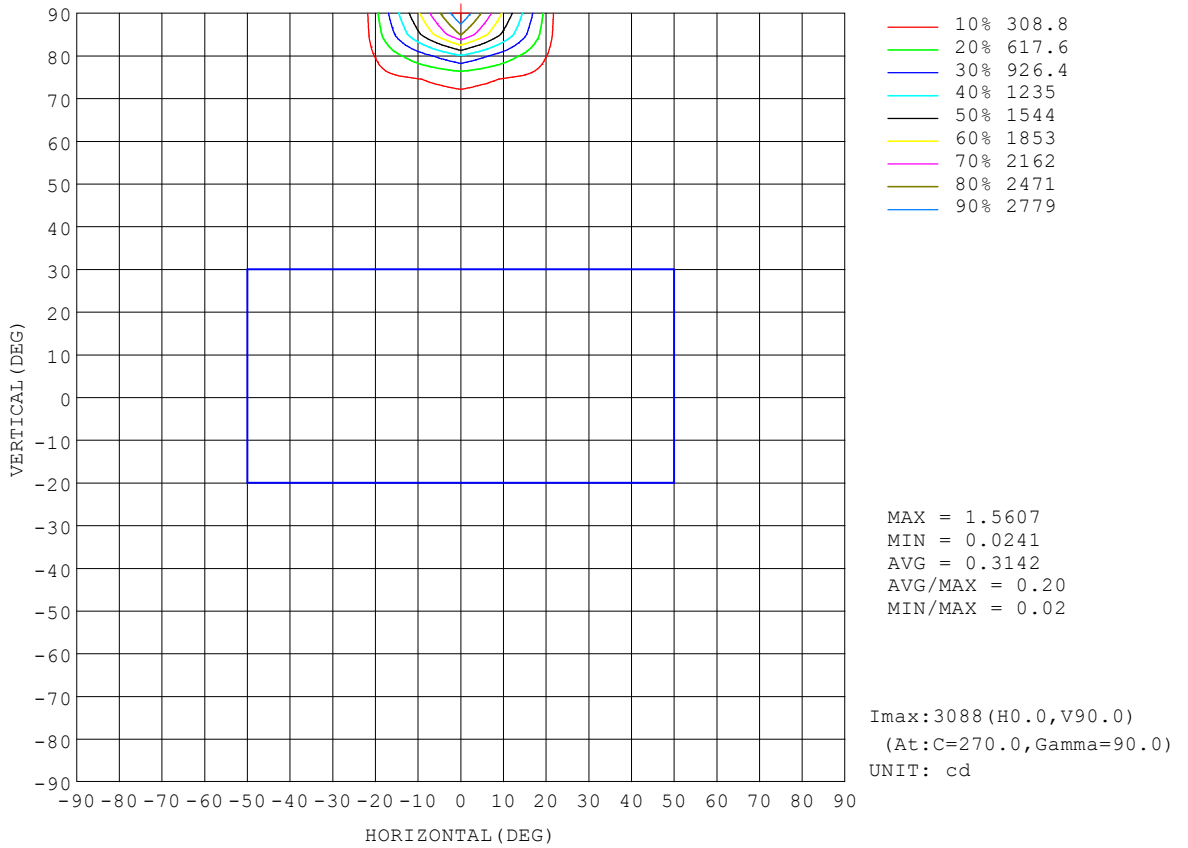
REFLECTANCE										
Ceiling	0.8	0.8	0.8	0.7	0.7	0.7	0.5	0.5	0.5	0
Walls	0.7	0.5	0.3	0.7	0.5	0.3	0.7	0.5	0.3	0
Working plane	0.2	0.2	0.2	0.2	0.2	0.2	0.2	0.2	0.2	0
ROOM INDEX	UTILIZATION FACTORS (PERCENT) $k(RI) \times RCR = 5$									
k = 0.60	30	16	7	29	15	7	27	14	7	0
0.80	36	20	10	35	19	10	31	18	9	0
1.00	41	24	12	39	23	12	35	23	11	1
1.25	47	28	16	44	27	15	39	24	13	1
1.50	51	32	19	48	30	18	42	27	16	2
2.00	58	39	25	54	36	23	46	32	20	4
2.50	63	44	30	58	41	28	50	36	24	7
3.00	67	49	35	62	46	33	53	39	28	9
4.00	73	57	43	67	52	40	57	45	34	13
5.00	77	62	49	71	58	46	60	49	39	17
ROOM INDEX	UF(total)									Direct
According to DIN EN 13032-2 2004			Suspended				SHRNOM = 1.25			

C Range: 0 - 360DEG
 C Interval: 22.5DEG
 Test Speed: HIGH
 Temperature: 25.3°C
 Operators: DAMIN
 Test Date: 2023-11-17

γ Range: 0 - 180DEG
 γ Interval: 5.0DEG
 Test System: EVERFINE GO-2000B_V1 SYSTEM V2.00.473
 Humidity: 65.0%
 Test Distance: 9.401m [K=1.0000]
 Remarks:

ISOCANDELA DIAGRAM

Test:U:220.34V I:0.0473A P:5.1955W PF:0.4982 Freq:50.00Hz Lamp Flux:486.472x1 lm		
NAME: 壁灯	TYPE: W系列	WEIGHT:
SPEC.:	DIM.:	SERIAL No.:
MFR.: EVERFINE	SUR.: 156.5mm	Shielding Angle:

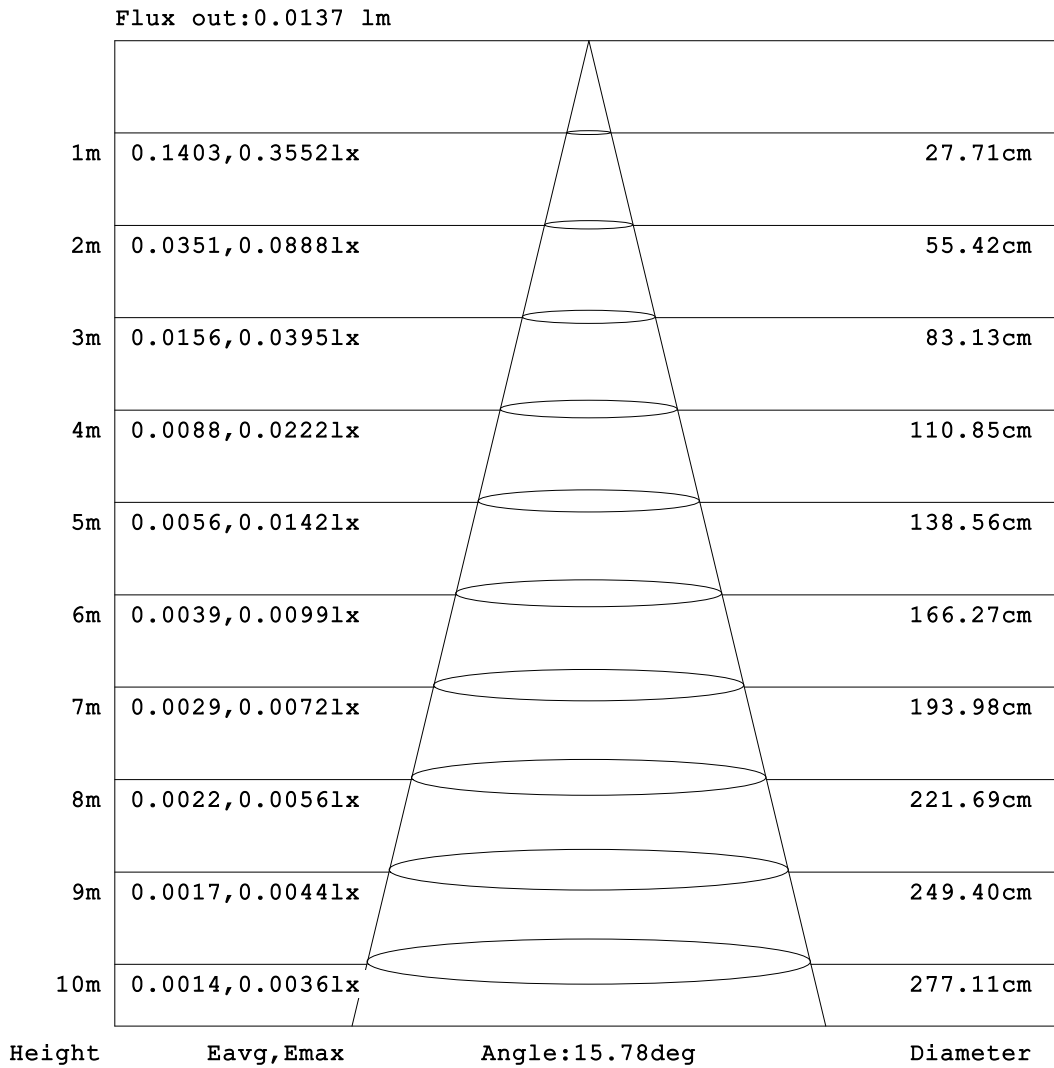


C Range: 0 - 360DEG
 C Interval: 22.5DEG
 Test Speed: HIGH
 Temperature:25.3°C
 Operators:DAMIN
 Test Date:2023-11-17

γ Range: 0 - 180DEG
 γ Interval: 5.0DEG
 Test System:EVERFINE GO-2000B_V1 SYSTEM V2.00.473
 Humidity:65.0%
 Test Distance:9.401m [K=1.0000]
 Remarks:

AAI Figure

Test:U:220.34V I:0.0473A P:5.1955W PF:0.4982 Freq:50.00Hz Lamp Flux:486.472x1 lm		
NAME: 壁灯	TYPE: W系列	WEIGHT:
SPEC.:	DIM.:	SERIAL No.:
MFR.: EVERFINE	SUR.: 156.5mm	Shielding Angle:



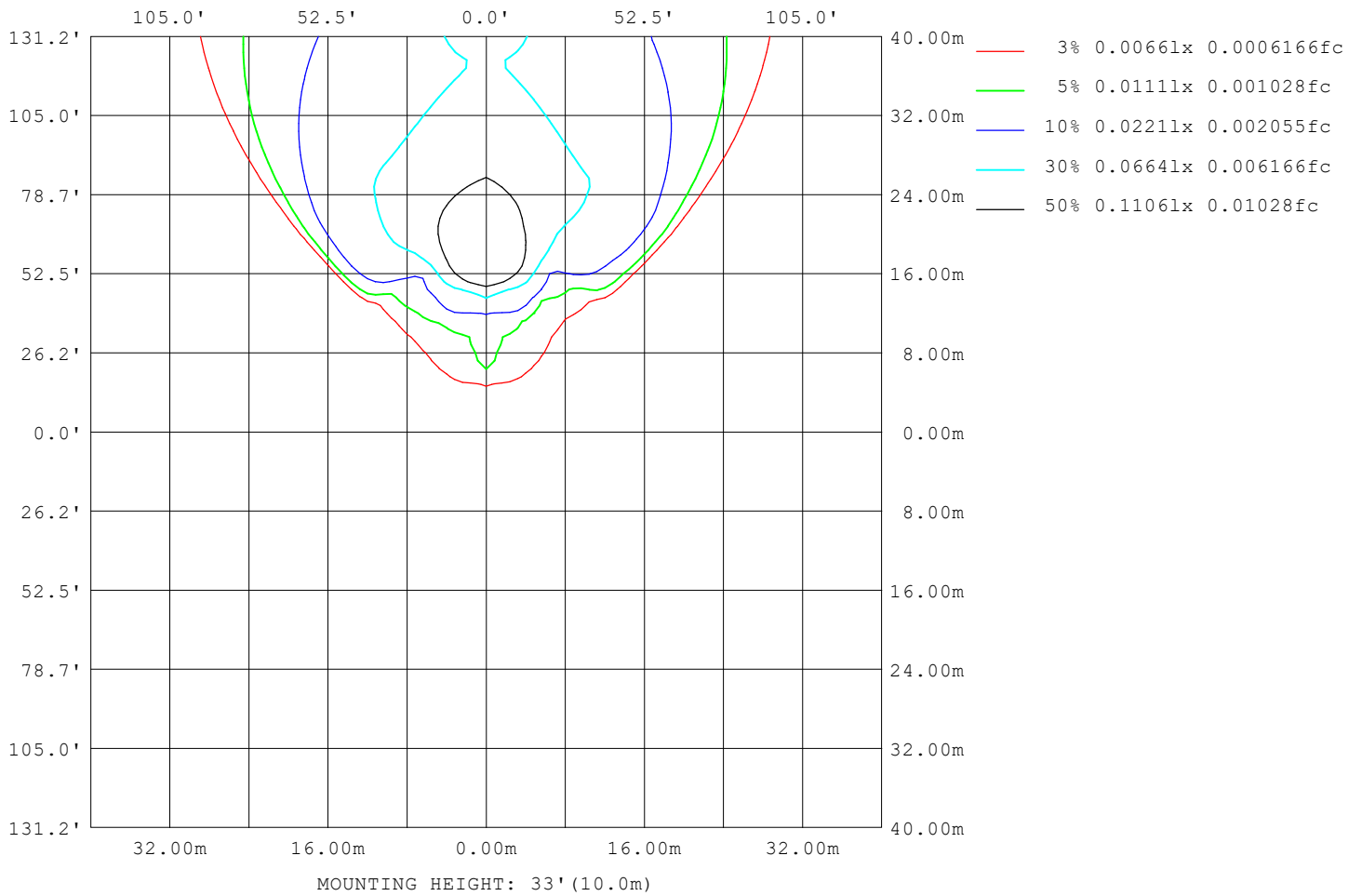
Note:The Curves indicate the illuminated area and the average illumination when the luminaire is at different distance.

C Range: 0 - 360DEG
C Interval: 22.5DEG
Test Speed: HIGH
Temperature:25.3°C
Operators:DAMIN
Test Date:2023-11-17

γ Range: 0 - 180DEG
γ Interval: 5.0DEG
Test System:EVERFINE GO-2000B_V1 SYSTEM V2.00.473
Humidity:65.0%
Test Distance:9.401m [K=1.0000]
Remarks:

ISOLUX DIAGRAM

Test:U:220.34V I:0.0473A P:5.1955W PF:0.4982 Freq:50.00Hz Lamp Flux:486.472x1 lm		
NAME: 壁灯	TYPE: W系列	WEIGHT:
SPEC.:	DIM.:	SERIAL No.:
MFR.: EVERFINE	SUR.: 156.5mm	Shielding Angle:



C Range: 0 - 360DEG
 C Interval: 22.5DEG
 Test Speed: HIGH
 Temperature:25.3°C
 Operators:DAMIN
 Test Date:2023-11-17

γ Range: 0 - 180DEG
 γ Interval: 5.0DEG
 Test System:EVERFINE GO-2000B_V1 SYSTEM V2.00.473
 Humidity:65.0%
 Test Distance:9.401m [K=1.0000]
 Remarks:

LED Avg.L Report

Test:U:220.34V I:0.0473A P:5.1955W PF:0.4982 Freq:50.00Hz Lamp Flux:486.472x1 lm		
NAME: 壁灯	TYPE: W系列	WEIGHT:
SPEC.:	DIM.:	SERIAL No.:
MFR.: EVERFINE	SUR.: 156.5mm	Shielding Angle:

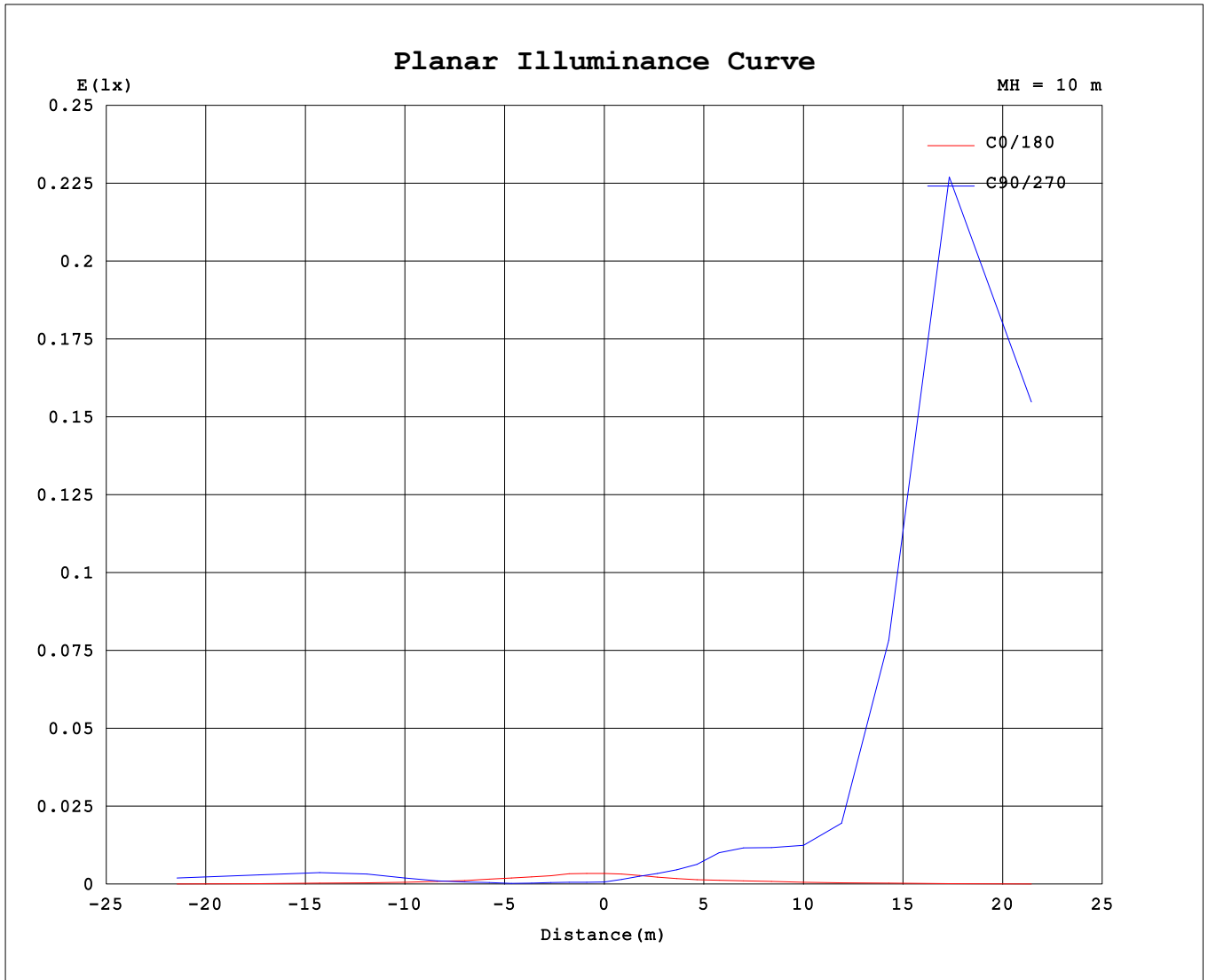
AvgL	cd/m2
L_0~180 (65) av	2
L_0~180 (75) av	3
L_0~180 (85) av	8
L_90~270 (65) av	3728
L_90~270 (75) av	11868
L_90~270 (85) av	217407
L_45 (65) av	38
L_45 (75) av	76
L_45 (85) av	255

Standard: GB/T 29293-2012

C Range: 0 - 360DEG
 C Interval: 22.5DEG
 Test Speed: HIGH
 Temperature:25.3℃
 Operators:DAMIN
 Test Date:2023-11-17

γ Range: 0 - 180DEG
 γ Interval: 5.0DEG
 Test System:EVERFINE GO-2000B_V1 SYSTEM V2.00.473
 Humidity:65.0%
 Test Distance:9.401m [K=1.0000]
 Remarks:

Planar Illuminance Curve



C Range: 0 - 360DEG
 C Interval: 22.5DEG
 Test Speed: HIGH
 Temperature: 25.3°C
 Operators: DAMIN
 Test Date: 2023-11-17

γ Range: 0 - 180DEG
 γ Interval: 5.0DEG
 Test System: EVERFINE GO-2000B_V1 SYSTEM V2.00.473
 Humidity: 65.0%
 Test Distance: 9.401m [K=1.0000]
 Remarks:

LUMINOUS DISTRIBUTION INTENSITY DATA

Test:U:220.34V I:0.0473A P:5.1955W PF:0.4982 Freq:50.00Hz Lamp Flux:486.472x1 lm		
NAME: 壁灯	TYPE: W系列	WEIGHT:
SPEC.:	DIM.:	SERIAL No.:
MFR.: EVERFINE	SUR.: 156.5mm	Shielding Angle:

Table--1

UNIT: cd

C (DEG) \ γ (DEG)	0	22.5	45	67.5	90	112.5	135	157.5	180	202.5	225	247.5	270	292.5	315	337.5			
0	0.12	0.12	0.12	0.12	0.12	0.12	0.12	0.12	0.12	0.12	0.12	0.12	0.12	0.12	0.12	0.12			
5	0.12	0.11	0.11	0.12	0.11	0.12	0.12	0.12	0.11	0.13	0.18	0.27	0.25	0.30	0.21	0.19			
10	0.12	0.08	0.10	0.12	0.11	0.12	0.10	0.07	0.10	0.15	0.24	0.53	0.41	0.63	0.28	0.24			
15	0.10	0.03	0.09	0.12	0.10	0.12	0.08	0.07	0.09	0.17	0.32	0.80	0.59	0.97	0.38	0.29			
20	0.10	0.02	0.07	0.12	0.07	0.12	0.08	0.07	0.07	0.20	0.40	1.19	0.86	1.41	0.48	0.34			
25	0.09	0.02	0.05	0.19	0.06	0.12	0.06	0.07	0.07	0.22	0.50	1.78	1.32	2.12	0.63	0.41			
30	0.08	0.02	0.05	0.37	0.15	0.28	0.06	0.07	0.07	0.26	0.63	3.28	2.37	3.70	0.80	0.49			
35	0.07	0.02	0.05	0.51	0.22	0.42	0.06	0.07	0.07	0.28	0.85	4.71	3.23	5.49	1.04	0.58			
40	0.07	0.02	0.05	0.71	0.39	0.63	0.06	0.08	0.07	0.32	1.22	6.01	3.98	6.96	1.46	0.70			
45	0.07	0.02	0.07	1.26	0.88	0.91	0.07	0.09	0.07	0.35	1.65	7.27	5.39	8.40	2.02	0.82			
50	0.07	0.02	0.13	2.55	1.92	1.61	0.09	0.12	0.07	0.40	1.95	11.44	11.23	10.92	2.43	0.93			
55	0.07	0.02	0.20	4.32	3.04	2.90	0.15	0.15	0.07	0.44	2.21	22.27	63.0	17.51	2.81	1.09			
60	0.07	0.02	0.28	5.90	3.76	4.60	0.22	0.15	0.07	0.49	2.38	44.8	275	41.6	3.12	1.17			
65	0.07	0.02	0.39	6.99	4.04	6.29	0.31	0.15	0.07	0.52	2.50	294	311	235	3.30	1.29			
70	0.07	0.02	0.47	7.67	4.30	7.62	0.42	0.15	0.07	0.56	2.65	511	367	551	3.59	1.36			
75	0.07	0.02	0.54	8.26	4.66	8.74	0.53	0.15	0.07	0.58	2.95	553	610	627	3.84	1.46			
80	0.07	0.02	0.61	8.50	4.80	9.40	0.64	0.15	0.07	0.60	3.05	585	1857	665	4.12	1.46			
85	0.07	0.02	0.64	8.53	4.81	9.60	0.72	0.15	0.07	0.62	3.45	607	3785	689	4.07	1.51			
90	0.07	0.02	0.61	7.34	4.40	8.53	0.71	0.15	0.07	0.63	3.51	610	4683	687	3.98	1.51			
95	0.07	0.02	0.59	7.29	4.20	8.86	0.70	0.15	0.06	0.63	2.72	585	3451	665	3.42	1.51			
100	0.07	0.02	0.61	6.85	4.06	8.96	0.90	0.15	0.06	0.43	0.65	72.7	745	70.8	0.96	1.22			
105	0.07	0.02	0.68	7.20	4.76	9.95	0.91	0.15	0.06	0.37	0.99	48.8	88.1	41.6	1.10	0.87			
110	0.07	0.01	0.57	6.37	4.23	9.38	0.91	0.15	0.05	0.48	2.15	455	300	431	1.83	0.87			
115	0.07	0.01	0.54	4.35	3.62	7.71	0.81	0.17	0.05	0.47	2.03	178	286	111	1.53	0.77			
120	0.06	0.00	0.46	3.20	2.70	6.22	0.69	0.10	0.05	0.38	1.58	16.55	23.5	17.05	1.20	0.53			
125	0.06	0.00	0.34	3.33	2.77	4.97	0.53	0.08	0.04	0.30	1.05	5.43	4.67	6.06	0.90	0.31			
130	0.06	0.00	0.22	2.14	1.99	2.48	0.36	0.05	0.04	0.25	0.63	3.25	2.33	3.59	0.41	0.12			
135	0.06	0.00	0.17	1.44	1.71	1.45	0.28	0.00	0.04	0.20	0.05	2.35	1.35	2.74	0.05	0.07			
140	0.06	0.00	0.11	0.76	0.78	0.93	0.19	0.00	0.04	0.18	0.22	1.11	1.00	1.23	0.15	0.05			
145	0.06	0.00	0.09	0.48	0.47	0.54	0.13	0.00	0.04	0.16	0.11	0.17	0.09	0.24	0.06	0.00			
150	0.06	0.00	0.04	0.34	0.32	0.28	0.05	0.00	0.03	0.14	0.01	0.17	0.37	0.22	0.00	0.00			
155	0.06	0.00	0.01	0.08	0.15	0.00	0.02	0.00	0.03	0.13	0.01	0.17	0.03	0.20	0.00	0.00			
160	0.06	0.00	0.00	0.00	0.03	0.00	0.03	0.00	0.03	0.13	0.00	0.07	0.01	0.06	0.00	0.00			
165	0.06	0.01	0.00	0.00	0.00	0.00	0.00	0.00	0.03	0.11	0.00	0.00	0.00	0.00	0.00	0.00			
170	0.06	0.05	0.00	0.00	0.00	0.00	0.00	0.00	0.03	0.10	0.00	0.00	0.00	0.00	0.00	0.00			
175	0.05	0.08	0.00	0.00	0.00	0.00	0.00	0.00	0.03	0.09	0.00	0.00	0.00	0.00	0.00	0.00			
180	0.04	0.08	0.00	0.00	0.00	0.00	0.00	0.00	0.03	0.08	0.00	0.00	0.00	0.00	0.00	0.00			

C Range: 0 - 360DEG
 C Interval: 22.5DEG
 Test Speed: HIGH
 Temperature:25.3°C
 Operators:DAMIN
 Test Date:2023-11-17

γ Range: 0 - 180DEG
 γ Interval: 5.0DEG
 Test System:EVERFINE GO-2000B_V1 SYSTEM V2.00.473
 Humidity:65.0%
 Test Distance:9.401m [K=1.0000]
 Remarks: